

# 642-647

## Cisco

### Deploying Cisco ASA VPN Solutions

Visit: <http://www.pass4sureofficial.com/exams.asp?examcode=642-647>

Pass4sureofficial.com is a reputable IT certification examination guide, study guides and audio exam provider, we not only ensure that you pass your 642-647 exam in first attempt, but also you can get a high score to acquire Cisco certification.

If you use pass4sureofficial 642-647 Certification questions and answers, you will experience actual 642-647 exam questions/answers. We know exactly what is needed and have all the exam preparation material required to pass the exam. Our Cisco exam prep covers over 95% of the questions and answers that may be appeared in your 642-647 exam. Every point from pass4sure 642-647 PDF, 642-647 review will help you take Cisco 642-647 exam much easier and become Cisco certified. All the Questions/Answers are taken from real exams.

Here's what you can expect from the Pass4sureOfficial Cisco 642-647 course:

- \* Up-to-Date Cisco 642-647 questions taken from the real exam.
- \* 100% correct Cisco 642-647 answers you simply can't find in other 642-647 courses.
- \* All of our tests are easy to download. Your file will be saved as a 642-647 PDF.
- \* Cisco 642-647 brain dump free content featuring the real 642-647 test questions.

Cisco 642-647 certification exam is of core importance both in your Professional life and Cisco certification path. With Cisco certification you can get a good job easily in the market and get on your path for success. Professionals who passed Cisco 642-647 exam training are an absolute favorite in the industry. You will pass Cisco 642-647 certification test and career opportunities will be open for you.



**QUESTION: 1**

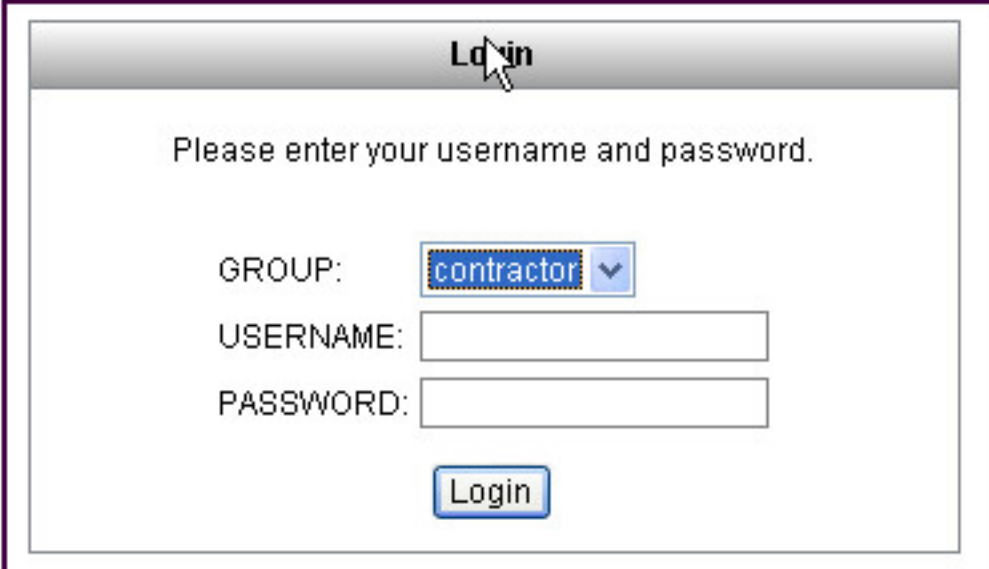
An XYZ Corporation systems engineer, while making a sales call on the ABC Corporation headquarters, tried to access the XYZ sales demonstration folder to transfer a demonstration via FTP from an ABC conference room behind the firewall. The engineer could not reach XYZ through the remote-access VPN tunnel. From home the previous day, however, the engineer connected to the XYZ sales demonstration folder and transferred the demonstration via IPsec over DSL. To get the connection to work and transfer the demonstration, what can you suggest?

- A. Change the MTU size on the IPsec client to account for the change from DSL to cable transmission.
- B. Enable the local LAN access option on the IPsec client.
- C. Enable the IPsec over TCP option on the IPsec client.
- D. Enable the clientless SSL VPN option on the PC

**Answer:** A

**QUESTION: 2**

Refer to the exhibit. For the ABC Corporation, members of the NOC need the ability to select tunnel groups from a drop-down menu on the Cisco IOS WebVPN login page. As the Cisco ASA administrator, how would you accomplish this task?



The screenshot shows a web browser window titled "Login". The main content area contains the text "Please enter your username and password." Below this text are three input fields: "GROUP:" with a dropdown menu currently showing "contractor", "USERNAME:" with an empty text box, and "PASSWORD:" with an empty text box. At the bottom of the form is a "Login" button.

- A. Define a special identity certificate with multiple groups that are defined in the certificate OU field that will grant the certificate holder access to the named groups on the login page.
- B. Under Group Policies, define a default group that encompasses the required individual groups that would appear on the login page.

- C. Under Connection Profiles, define a NOC profile that encompasses the required individual profiles that would appear on the login page.  
 D. Under Connection Profiles, enable group selection from the login page.

**Answer:** D

**QUESTION:** 3

Which four parameters must be defined in an ISAKMP policy when creating an IPsec site-to-site VPN using the Cisco ASDM? (Choose four.)

The screenshot shows the Cisco ASDM configuration interface. The 'Instruction' pane at the top contains a simulation task description. The 'Scenario' pane below it provides context for the task, stating the user is a firewall administrator for a small company and needs to add support for a new group of Cisco AnyConnect SSL VPN users, 'contractors'. The 'Topology' pane on the right shows a diagram of a 'Contractor' PC connected to a cloud, which is then connected to a Cisco ASA firewall.

**Instruction**  
 This item contains a simulation task. Refer to the scenario and topology before starting. Open the Topology window and click the required device to open the GUI window on a virtual terminal. Check your configuration from the client system in the topology. Only after you complete all the required configurations successfully can you access the contractor PC to test the VPN access. To perform the test, enter the <https://192.168.4.2/contractor> URL in the browser, click GO, and log in as contractor1. Then, from the SSL VPN port, choose **Network Access** then **Start AnyConnect**. Use scrolls to view all parts of the Cisco ASDM screens.  
 Note: In this simulation, not all Cisco ASDM screens are fully functional.

**Scenario**  
 You are the firewall administrator for a small company. The company currently supports SSL VPN for "employees" only. Your job is to add support for a new group of Cisco AnyConnect SSL VPN users, "contractors", on the Cisco ASA using Cisco ASDM. For this exercise, the SSL VPN wizard has been deactivated. You will be asked to add a new connection profile, a new Group Policy, and a new user account. Use this information to complete the configurations:

- New Connection Profile
  - Name: contractor
  - AAA server group: LOCAL
  - Default Group Policy: contractor
  - Connection Alias: contractor
  - Group URL: <https://192.168.4.2/contractor>
- New IP address pool
  - Name: contractor
  - IP address range: 10.0.4.50/24 - 10.0.4.70/24
- New internal group policy
  - Name: contractor
  - Only permitted these two tunneling protocols: client and clientless SSL VPN
  - Add a new banner: "Welcome Contractors"
- Local User
  - Name: contractor1
  - Password: cisco
  - "contractor1" access restrictions: no ASDM, SSH, Telnet, or console access
  - Lock "contractor1" user to the "contractor" Connection Profile

**TOPOLOGY**  
 "Contractor" PC

- A. encryption algorithm  
 B. hash algorithm  
 C. authentication method  
 D. IP address of remote IPsec peer  
 E. D-H group  
 F. perfect forward secrecy

**Answer:** A, B, C, E

**QUESTION:** 4

An administrator has preconfigured the Cisco ASA 5505 user settings with a username and a password. When the telecommuter first turns on the Cisco ASA 5505 and attempts to establish a VPN tunnel, the user is prompted for a username and password. Which two Cisco ASA 5505 Group Policy features require this extra level of authentication? (Choose two.)

- A. New Unit Authentication
- B. Extended Group Authentication
- C. Secure Unit Authentication
- D. Role-Based Access Control Authentication
- E. Compartmented Mode Authentication
- F. Individual User Authentication

**Answer:** C, F

**QUESTION: 5**

Refer to the exhibit. Which two statements are correct regarding these two Cisco ASA clientless SSL VPN bookmarks? (Choose two.)

```
http://server/homepage/CSCO_WEBVPN_USERNAME.html
ssh://sshserver/?cscsso=1
```

- A. CSCO\_WEBVPN\_USERNAME is a user attribute.
- B. CSCO\_WEBVPN\_USERNAME is a Cisco predefined variable that is used for macro substitution.
- C. The CSCO\_WEBVPN\_USERNAME variable is enabled by using the Post SSO plug-in.
- D. CSCO\_SSO is a Cisco predefined variable that is used for macro substitution.
- E. The CSCO\_SSO=1 parameter enables SSO for the SSH plug-in.
- F. The CSCO\_SSO variable is enabled by using the Post SSO plug-in.

**Answer:** B, E

**QUESTION: 6**

Which Cisco ASA SSL VPN feature provides support for PCI compliance by allowing for the validation of two sets of username and password credentials on the SSL VPN login page?

- A. Single Sign-On
- B. Certificate to Profile Mapping
- C. Double Authentication
- D. RSA OTP

**Answer:** D

**QUESTION: 7**

Which two types of digital certificate enrollment processes are available for the Cisco ASA security appliance? (Choose two.)

- A. LDAP
- B. FTP
- C. TFTP
- D. HTTP
- E. SCEP
- F. Manual

**Answer:** E, F

**QUESTION: 8**

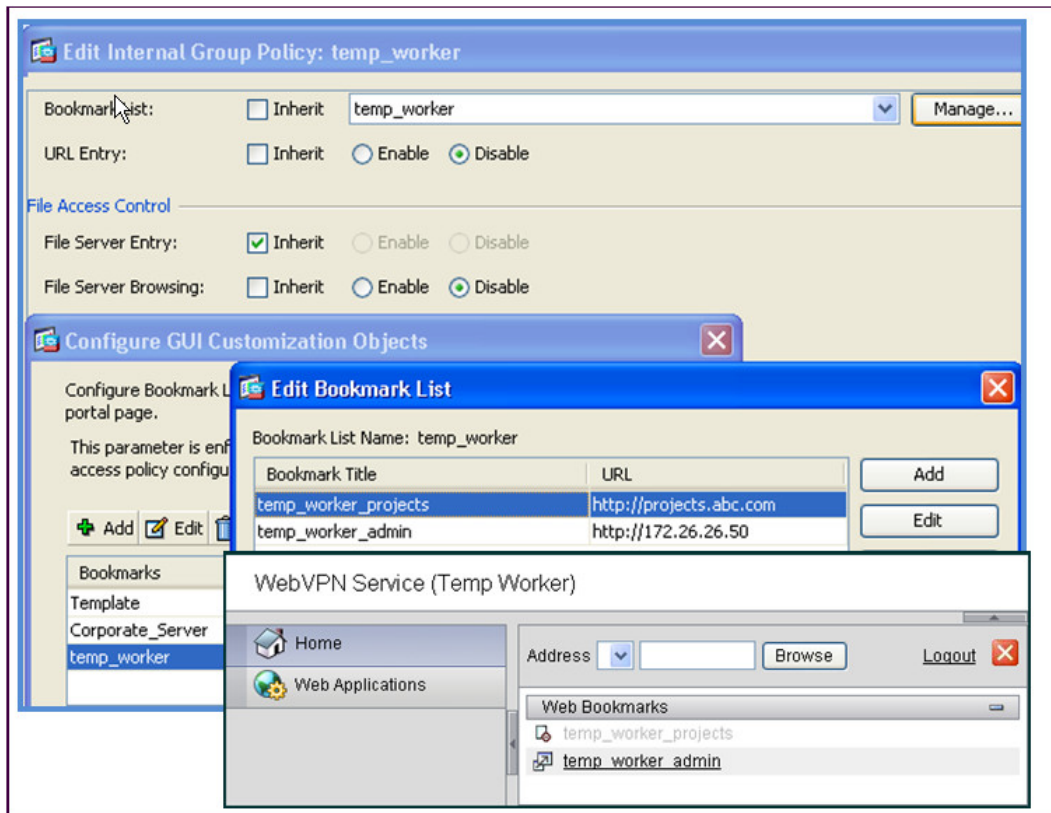
Your corporate finance department purchased a new non-web-based TCP application tool to run on one of its servers. The finance employees need remote access to the software during non-business hours. The employees do not have "admin" privileges to their PCs. How would you configure the SSL VPN tunnel to allow this application to run?

- A. Configure a smart tunnel for the application.
- B. Configure a "finance tool" VNC bookmark on the employee clientless SSL VPN portal.
- C. Configure the plug-in that best fits the application.
- D. Configure the Cisco ASA appliance to download the Cisco AnyConnect SSL VPN client to the finance employee each time an SSL VPN tunnel is established.

**Answer:** A

**QUESTION: 9**

Refer to the exhibit. A new network engineer configured the ABC adaptive security appliance with two bookmarks for a new temporary employee. The temporary worker can connect to the administrator server via the temp\_worker\_admin bookmark but cannot connect to the project server via the temp\_worker\_projects (greyed-out) bookmark. It was determined that the URL and IP addressing information in the GUI screens is correct.



What is wrong with the configuration?

- A. URL Entry should be enabled.
- B. The File Server Entry Inherit parameter should be overwritten and set for enabled.
- C. The DNS server information is incorrect.
- D. File Server Browsing should be enabled

**Answer:** C

**QUESTION:** 10

Refer to the exhibit. When an SSL VPN user, contractor1, enters https://192.168.4.2 (the outside address of the Cisco ASA appliance) into the browser, an SSL VPN Login screen appears. Along with the information that is contained in the Cisco ASDM configuration screens, what can an administrator determine about the state of the connection after the user clicks the Login button?

## Pass4SureOfficial.com Lifetime Membership Features;

- Pass4SureOfficial Lifetime Membership Package includes over **2500** Exams.
- **All** exams Questions and Answers are included in package.
- **All** Audio Guides are included **free** in package.
- **All** Study Guides are included **free** in package.
- **Lifetime** login access.
- Unlimited download, no account expiry, no hidden charges, just one time \$99 payment.
- **Free updates** for Lifetime.
- **Free Download Access** to All new exams added in future.
- Accurate answers with explanations (If applicable).
- Verified answers researched by industry experts.
- Study Material **updated** on regular basis.
- Questions, Answers and Study Guides are downloadable in **PDF** format.
- Audio Exams are downloadable in **MP3** format.
- **No authorization** code required to open exam.
- **Portable** anywhere.
- 100% success **Guarantee**.
- **Fast**, helpful support 24x7.

View list of All exams (Q&A) downloads

<http://www.pass4sureofficial.com/allexams.asp>

View list of All Study Guides (SG) downloads

<http://www.pass4sureofficial.com/study-guides.asp>

View list of All Audio Exams (AE) downloads

<http://www.pass4sureofficial.com/audio-exams.asp>

Download All Exams Samples

<http://www.pass4sureofficial.com/samples.asp>

To purchase \$99 Lifetime Full Access Membership click here

<http://www.pass4sureofficial.com/purchase.asp>

3COM	CompTIA	Filemaker	IBM	LPI	OMG	Sun
ADOBE	ComputerAssociates	Fortinet	IISFA	McAfee	Oracle	Sybase
APC	CWNP	Foundry	Intel	McData	PMI	Symantec
Apple	DELL	Fujitsu	ISACA	Microsoft	Polycom	TeraData
BEA	ECCouncil	GuidanceSoftware	ISC2	Mile2	RedHat	TIA
BICSI	EMC	HDI	ISEB	NetworkAppliance	Sair	Tibco
CheckPoint	Enterasys	Hitachi	ISM	Network-General	SASInstitute	TruSecure
Cisco	ExamExpress	HP	Juniper	Nokia	SCP	Veritas
Citrix	Exin	Huawei	Legato	Nortel	See-Beyond	Vmware
CIW	ExtremeNetworks	Hyperion	Lotus	Novell	SNIA	

