

50-691

Novell

Advanced Novell Network Management - Netware 6.5

Visit: <http://www.pass4sureofficial.com/exams.asp?examcode=50-691>

Pass4sureofficial.com is a reputable IT certification examination guide, study guides and audio exam provider, we not only ensure that you pass your 50-691 exam in first attempt, but also you can get a high score to acquire Novell certification.

If you use pass4sureofficial 50-691 Certification questions and answers, you will experience actual 50-691 exam questions/answers. We know exactly what is needed and have all the exam preparation material required to pass the exam. Our Novell exam prep covers over 95% of the questions and answers that may be appeared in your 50-691 exam. Every point from pass4sure 50-691 PDF, 50-691 review will help you take Novell 50-691 exam much easier and become Novell certified. All the Questions/Answers are taken from real exams.

Here's what you can expect from the Pass4sureOfficial Novell 50-691 course:

- * Up-to-Date Novell 50-691 questions taken from the real exam.*
- * 100% correct Novell 50-691 answers you simply can't find in other 50-691 courses.*
- * All of our tests are easy to download. Your file will be saved as a 50-691 PDF.*
- * Novell 50-691 brain dump free content featuring the real 50-691 test questions.*

Novell 50-691 certification exam is of core importance both in your Professional life and Novell certification path. With Novell certification you can get a good job easily in the market and get on your path for success. Professionals who passed Novell 50-691 exam training are an absolute favorite in the industry. You will pass Novell 50-691 certification test and career opportunities will be open for you.



Exam Name:	Advanced Novell Network Management Netware 6.5		
Exam Type:	Novell		
Exam Code:	50-691	Total Questions:	145

Question: 1

Which RAID levels can be implemented with NSS? (Choose 2.)

- A. 0
- B. 1
- C. 2
- D. 3
- E. 4
- F. 5
- G. 6
- H. 7

Answer: A, B

Question: 2

Which method allows you to increase the amount of storage space on a server without adding more storage devices?

- A. Overbook the storage pool.
- B. Increase the size of the storage pool.
- C. Decrease the size of the storage pool.
- D. Recreate the partitions that a storage pool contains.

Answer: A

Question: 3

Your NetWare 6.5 server has been assigned the DNS name of da1.da.com. Which URL would you use in a browser window to access the iMonitor service on this server?

- A. http://da1.da.com:8009/nds-summary
- B. http://da1.da.com:8009/edir-summary
- C. https://da1.da.com:8009/nds-summary
- D. https://da1.da.com:8008/nds-summary
- E. https://da1.da.com:8009/edir-summary
- F. https://da1.da.com:8008/edir-summary

Answer: C

Question: 4

You want to split your DATA volume at the DATA:\USERS subdirectory level to the VOL1 volume on DA1. DA1 is located in the .Contractors.DA container in the DA-TREE tree. Which command, when issued from the server console, will do this?

- A. VLMN SPLIT DATA:\USERS VOL1
- B. VOLMN SPLIT DATA:\USERS VOL1
- C. VLMN SPLIT DATA:\USERS VOL1 DA1.Contractors.DA.DA-TREE
- D. VLMN SPLIT DATA:\USERS VOL1 .DA1.Contractors.DA.DA-TREE.
- E. VOLMN SPLIT DATA:\USERS VOL1 .DA1.Contractors.DA.DA-TREE
- F. VOLMN SPLIT DATA:\USERS VOL1 .DA1.Contractors.DA.DA-TREE.

Answer: F

Question: 5

When a DFS junction is created, the VLDB assigns the junction a unique ID. Where is this unique ID stored? (Choose 2.)

Exam Name:	Advanced Novell Network Management Network 6.5		
Exam Type:	Novell		
Exam Code:	50-691	Total Questions:	145

- A. In the VLDB
- B. In ConsoleOne
- C. In the volume's ACL
- D. In the NetWare Registry
- E. In the server's eDirectory object
- F. In the volume's eDirectory object
- G. In the Registry of the client workstations

Answer: A, F

Question: 6

While installing the Branch Office Appliance software, you are prompted to save the configuration to a diskette that can be used later during the installation of other Appliances. If you choose to do so, what filename is the configuration saved under?

- A. AUTOEXEC.NCF
- B. AUTOLOAD.CNF
- C. AUTOLOAD.NBO
- D. NBOCONFIG.NCF
- E. NBOCONFIG.TXT
- F. AUTOCONFIG.NCF

Answer: C

Question: 7

While migrating a NetWare 5.1 server to NetWare 6.5 using a Windows 2000 Professional workstation with Novell Client 4.83 installed, the migration fails. Given that the destination server has Universal Password deployed, what is the cause of the problem?

- A. Universal Password requires Novell Client 4.9 or later.
- B. Windows 2000 isn't compatible with Universal Password.
- C. The Migration Wizard isn't compatible with Windows 2000 Professional.
- D. NMAS must be disabled on the Novell Client 4.83 to be compatible with Universal Password.
- E. Novell Client 4.83 requires NICI 2.0.2 or later installed to be compatible with Universal Password.

Answer: A

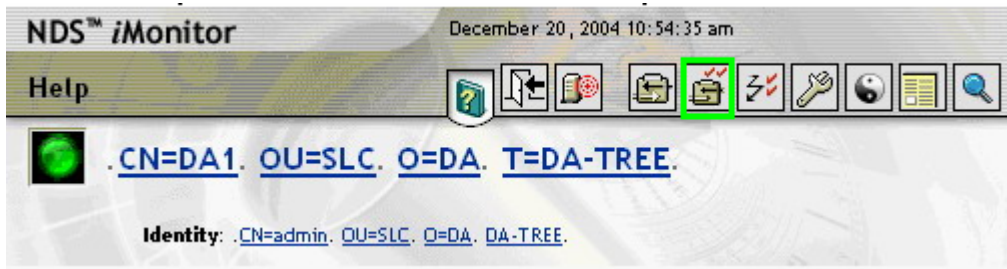
Question: 8

Click the Point-and-Click button to begin.
Click on the option that will allow you to check the version of eDirectory on a server.



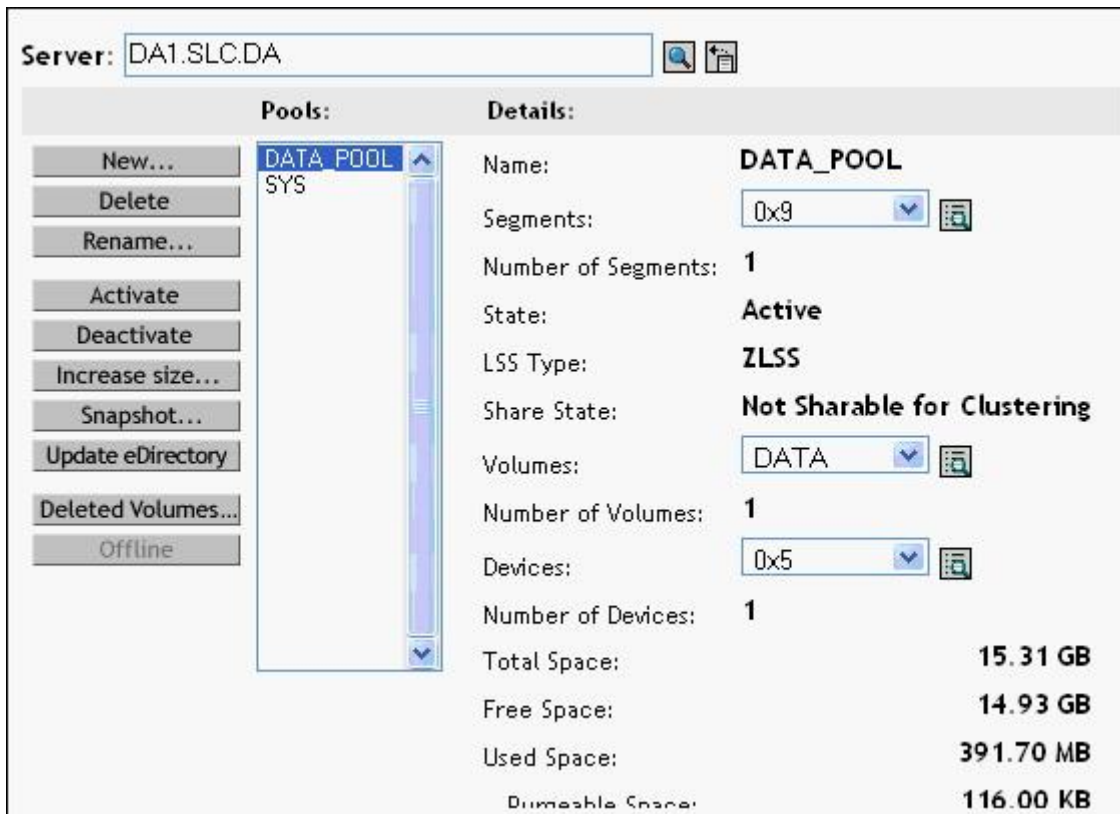
Answer:

Exam Name:	Advanced Novell Network Management Netware 6.5		
Exam Type:	Novell		
Exam Code:	50-691	Total Questions:	145



Question: 9

You need to restore an NSS logical volume that was deleted, but has not yet been purged. Click the area of the graphic that allows you to accomplish this task.



Answer:

Exam Name:	Advanced Novell Network Management Network 6.5		
Exam Type:	Novell		
Exam Code:	50-691	Total Questions:	145

Server: DA1.SLC.DA

Pools:	Details:
<p>New...</p> <p>Delete</p> <p>Rename...</p> <p>Activate</p> <p>Deactivate</p> <p>Increase size...</p> <p>Snapshot...</p> <p>Update eDirectory</p> <p>Deleted Volumes...</p> <p>Offline</p>	<p>Name: DATA_POOL</p> <p>Segments: 0x9</p> <p>Number of Segments: 1</p> <p>State: Active</p> <p>LSS Type: ZLSS</p> <p>Share State: Not Sharable for Clustering</p> <p>Volumes: DATA</p> <p>Number of Volumes: 1</p> <p>Devices: 0x5</p> <p>Number of Devices: 1</p> <p>Total Space: 15.31 GB</p> <p>Free Space: 14.93 GB</p> <p>Used Space: 391.70 MB</p> <p>Dismountable Space: 116.00 KB</p>

Question: 10

Assuming the CD drive in your workstation is assigned drive letter D, where is the installation file for the Server Consolidation Utility located?

- A. D:\NWSC.EXE
- B. D:\SERVCONS.EXE
- C. D:\TOOLS\NWSC.EXE
- D. D:\TOOLS\SERVCONS.EXE
- E. D:\PRODUCTS\SERVCONS\NWSC.EXE
- F. D:\PRODUCTS\SERVCONS\SERVCONS.EXE

Answer: E

Question: 11

You're re-installing the Appliance software on your server. What will happen to your existing user data?

- A. All existing data will be lost when the appliance re-images the drive.
- B. The installation program will ask if you want to delete or preserve the existing data.
- C. The installation program will prompt you that the Appliance software already exists and will exit.
- D. The installation program will save the existing data in the Sys:\System.bak file on the Appliance.
- E. The existing data will be detected and copied to a new partition where it can be accessed when the installation is complete.

Answer: B

Exam Name:	Advanced Novell Network Management Netware 6.5		
Exam Type:	Novell		
Exam Code:	50-691	Total Questions:	145

Question: 12

The DirXML driver is comprised of 2 components. What are they? (Choose 2.)

- A. Join Engine
- B. XML Interface
- C. Publisher Filter
- D. Subscriber Filterss
- E. eDirectory Interface
- F. Application Native Interface

Answer: B, F

Question: 13

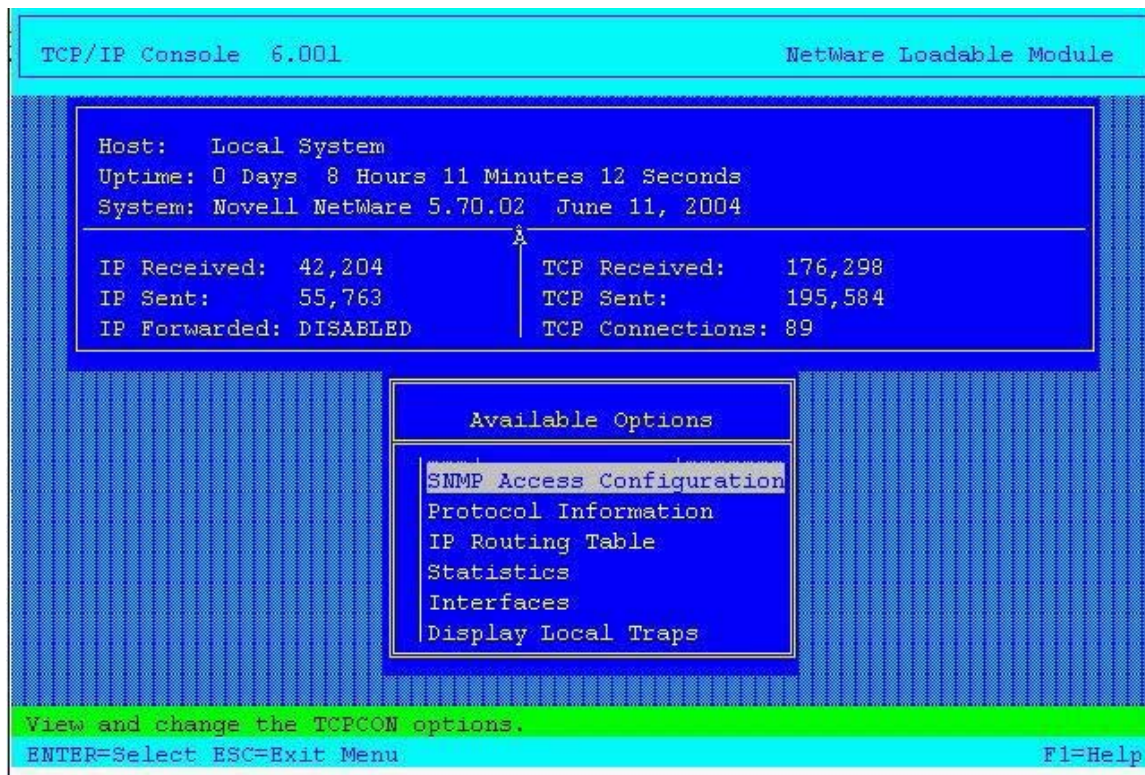
Which preconfigured report searches the entire tree, communicates with every NetWare server it finds, and reports errors?

- A. Agent Health
- B. Obituary Listing
- C. Object Statistics
- D. Server Information
- E. Service Advertising

Answer: D

Question: 14

Click the Point and Click button to begin. Click the TCPCON option you would select if you wanted to view the MTU size your server is using.



Exam Name:	Advanced Novell Network Management Netware 6.5		
Exam Type:	Novell		
Exam Code:	50-691	Total Questions:	145

Answer:

```

TCP/IP Console 6.001                               NetWare Loadable Module

Host: Local System
Uptime: 0 Days 8 Hours 11 Minutes 12 Seconds
System: Novell NetWare 5.70.02 June 11, 2004

IP Received: 42,204      TCP Received: 176,298
IP Sent: 55,763        TCP Sent: 195,584
IP Forwarded: DISABLED  TCP Connections: 89

Available Options
SMMP Access Configuration
Protocol Information
IP Routing Table
Statistics
Interfaces
Display Local Traps

View and change the TCPCON options.
ENTER>Select ESC=Exit Menu F1=Help

```

Question: 15

You have an NSS pool named APPS_POOL. You have taken 4 snapshots of it. What is the default name assigned by NSS to the 4th snapshot of the pool?

- A. APPS_POOL4
- B. APPS_POOL-4
- C. APPS_POOL_4
- D. APPS_POOL_S4
- E. APPS_POOL_S_4
- F. APPS_POOL_4_S

Answer: D

Question: 16

You're troubleshooting a routing problem in your organization's network. To test a hypothesis, you need to run the TRACERT command from one of your Windows XP workstations to trace the route to corp.da.com with the maximum number of router hops constrained to 4. Which command should you use to do this?

- A. TRACERT -4 corp.da.com
- B. TRACERT corp.da.com -4
- C. TRACERT -H 4 corp.da.com
- D. TRACERT -R 4 corp.da.com
- E. TRACERT -A 4 corp.da.com
- F. TRACERT corp.da.com -D 4

Answer: C

Pass4SureOfficial.com Lifetime Membership Features;

- Pass4SureOfficial Lifetime Membership Package includes over **2500** Exams.
- **All** exams Questions and Answers are included in package.
- **All** Audio Guides are included **free** in package.
- **All** Study Guides are included **free** in package.
- **Lifetime** login access.
- Unlimited download, no account expiry, no hidden charges, just one time \$99 payment.
- **Free updates** for Lifetime.
- **Free Download Access** to All new exams added in future.
- Accurate answers with explanations (If applicable).
- Verified answers researched by industry experts.
- Study Material **updated** on regular basis.
- Questions, Answers and Study Guides are downloadable in **PDF** format.
- Audio Exams are downloadable in **MP3** format.
- **No authorization** code required to open exam.
- **Portable** anywhere.
- 100% success **Guarantee**.
- **Fast**, helpful support 24x7.

View list of All exams (Q&A) downloads

<http://www.pass4sureofficial.com/allexams.asp>

View list of All Study Guides (SG) downloads

<http://www.pass4sureofficial.com/study-guides.asp>

View list of All Audio Exams (AE) downloads

<http://www.pass4sureofficial.com/audio-exams.asp>

Download All Exams Samples

<http://www.pass4sureofficial.com/samples.asp>

To purchase \$99 Lifetime Full Access Membership click here

<http://www.pass4sureofficial.com/purchase.asp>

3COM	CompTIA	Filemaker	IBM	LPI	OMG	Sun
ADOBE	ComputerAssociates	Fortinet	IISFA	McAfee	Oracle	Sybase
APC	CWNP	Foundry	Intel	McData	PMI	Symantec
Apple	DELL	Fujitsu	ISACA	Microsoft	Polycom	TeraData
BEA	ECCouncil	GuidanceSoftware	ISC2	Mile2	RedHat	TIA
BICSI	EMC	HDI	ISEB	NetworkAppliance	Sair	Tibco
CheckPoint	Enterasys	Hitachi	ISM	Network-General	SASInstitute	TruSecure
Cisco	ExamExpress	HP	Juniper	Nokia	SCP	Veritas
Citrix	Exin	Huawei	Legato	Nortel	See-Beyond	Vmware
CIW	ExtremeNetworks	Hyperion	Lotus	Novell	SNIA	

