

74-924

Microsoft

Visit: <http://www.pass4sureofficial.com/exams.asp?examcode=74-924>

Pass4sureofficial.com is a reputable IT certification examination guide, study guides and audio exam provider, we not only ensure that you pass your 74-924 exam in first attempt, but also you can get a high score to acquire Microsoft certification.

If you use pass4sureofficial 74-924 Certification questions and answers, you will experience actual 74-924 exam questions/answers. We know exactly what is needed and have all the exam preparation material required to pass the exam. Our Microsoft exam prep covers over 95% of the questions and answers that may be appeared in your 74-924 exam. Every point from pass4sure 74-924 PDF, 74-924 review will help you take Microsoft 74-924 exam much easier and become Microsoft certified. All the Questions/Answers are taken from real exams.

Here's what you can expect from the Pass4sureOfficial Microsoft 74-924 course:

- * Up-to-Date Microsoft 74-924 questions taken from the real exam.
- * 100% correct Microsoft 74-924 answers you simply can't find in other 74-924 courses.
- * All of our tests are easy to download. Your file will be saved as a 74-924 PDF.
- * Microsoft 74-924 brain dump free content featuring the real 74-924 test questions.

Microsoft 74-924 certification exam is of core importance both in your Professional life and Microsoft certification path. With Microsoft certification you can get a good job easily in the market and get on your path for success. Professionals who passed Microsoft 74-924 exam training are an absolute favorite in the industry. You will pass Microsoft 74-924 certification test and career opportunities will be open for you.



QUESTION: 1

You are an IT professional who are specialized in Microsoft Office Communications Server 2007. Now you are employed in an international company which is named Wiikigo. You are in charge of providing technical support to your company. You are planning to deploy a Microsoft Office Communications Server (OCS) 2007 network. Installation of 500 Microsoft Office Communicator phones in Huston is included in the deployment plan. According to the company requirement, you have to make sure that the OCS 2007 deployment meets the following requirements: Users must be able to use the Session Initiation Protocol (SIP) addresses and a five-digit dialing feature to make Office Communicator calls to each other. Users must be able to make Public switched telephone network (PSTN) calls to the Office Communicator phones. So what should you do? (Choose more than one)

- A. A normalization rule in the Huston location profile should be configured to translate the five-digit dialing into a full E.164 number for the Office Communicator users.
- B. A Mediation Server in Huston should be installed and configured.
- C. All the Office Communicator users should be configured with a SIP URI and a full E.164 number.
- D. A Phone Usage record should be configured for Huston, and it should be assigned to the Office Communicator users.
- E. A Route should be configured to the Huston Mediation Server, and the Target Regular Expression should be configured to support the five-digit dialing feature.

Answer: A, B, C

QUESTION: 2

You are an IT professional who are specialized in Microsoft Office Communications Server 2007. Now you are employed in an international company which is named Wiikigo. You are in charge of providing technical support to your company. You have Microsoft Office Communication Server (OCS) 2007 and Microsoft Office Communicator 2007 client installed on your company network. You set up a Windows SharePoint Services 3.0 server and configure the Windows Server 2003 Certificate Authority for autoenrollment. Besides, you have Office Communicator Phone Edition phones installed and block UDP ports between 100 and 200 on your firewall that are outbound to the Internet. You find that the Office Communicator Phone Edition phones do not register to OCS 2007 server. These phones do not have correct IP addresses and do not display the correct date and time. You have to make sure that the following business requirements are met: The network must have

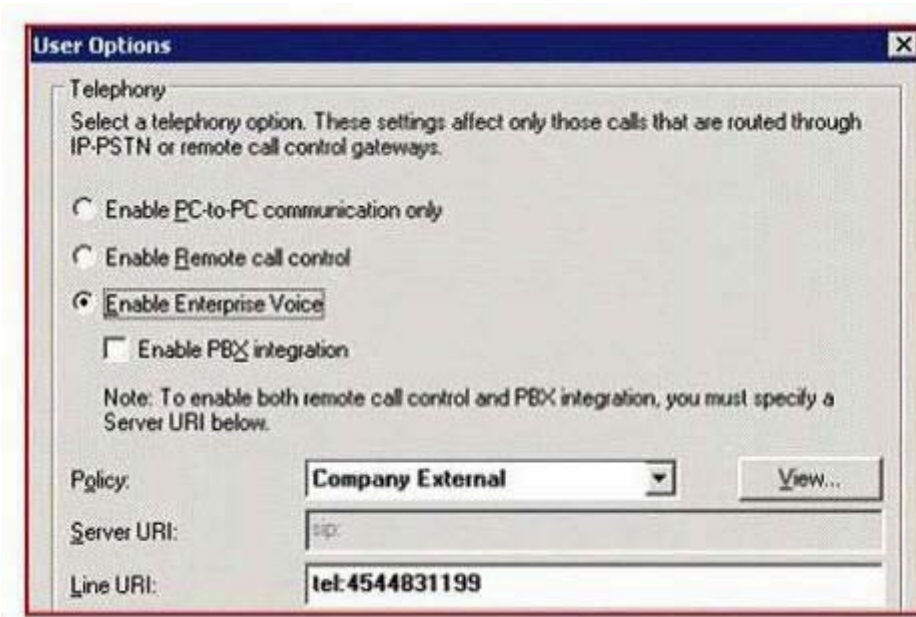
full Exchange Server 2007 functionality. The phones must be connected to a separate virtual LAN (VLAN) along with all required servers that serve the physical phones. So what should you do to make sure of this? (Choose more than one)

- A. DNS for a SIP domain and an SMTP domain should be configured. DHCP scopes and scope options should be configured for the Office Communicator Phone Edition phones and the SharePoint Server. DNS SRV records should be configured for the SharePoint Server.
- B. An internal NTP time source should be configured. A DNS SRV record should be configured to point to the internal NTP time source.
- C. DNS for a SIP domain only should be configured. DHCP scopes and scope options should be configured for the Office Communicator Phone Edition phones.
- D. DNS for an SMTP domain only should be configured. DHCP scopes and scope options should be configured for the Office Communicator Phone Edition phones.
- E. DNS for a SIP domain and an SMTP domain should be configured. DHCP scopes and scope options should be configured for the Office Communicator Phone Edition phones.

Answer: B, E

QUESTION: 3

You are an IT professional who are specialized in Microsoft Office Communications Server 2007. Now you are employed in an international company which is named Wiikigo. You are in charge of providing technical support to your company. Microsoft Office Communications Server (OCS) 2007 has been installed in your company. The Enterprise Voice feature is enabled for all users. Now you receive a user report saying that she cannot receive calls from coworkers that are hosted on the PBX. The User Options exhibit below shows the configuration of the User Options setting for the user. You have to make sure that the user is able to receive calls from Microsoft Office Communicator 2007 client applications and the PSTN. So what action should you perform to make sure of this???



- A. The Policy option of the user should be changed from Company External to Company Internal.0
- B. The Enable Remote call control option should be chosen.
- C. Enter a value in the Line URI text box that complies with the RFC 3966 format and includes a country code.
- D. The Enable PBX integration check box should be chosen, and then specify a server URI that points to the PBX.

Answer: C

QUESTION: 4

You are an IT professional who are specialized in Microsoft Office Communications Server 2007. Now you are employed in an international company which is named Wiikigo. You are in charge of providing technical support to your company. Your company has offices in Boston and Paris. These offices are connected by an IP WAN configured for full duplex. You deploy a Microsoft Office Communications Server (OCS) 2007 Standard Edition front-end server in the Boston office. Microsoft Office Communicator 2007 users place voice calls between the two offices through the WAN. You find that most of the IP WAN bandwidth is utilized by data traffic. Only 440 Kbps of bandwidth is available for voice calls. You have to calculate the number of concurrent voice calls that will be supported between the two offices, including Ethernet and SRTP overhead per call. How many calls should the current

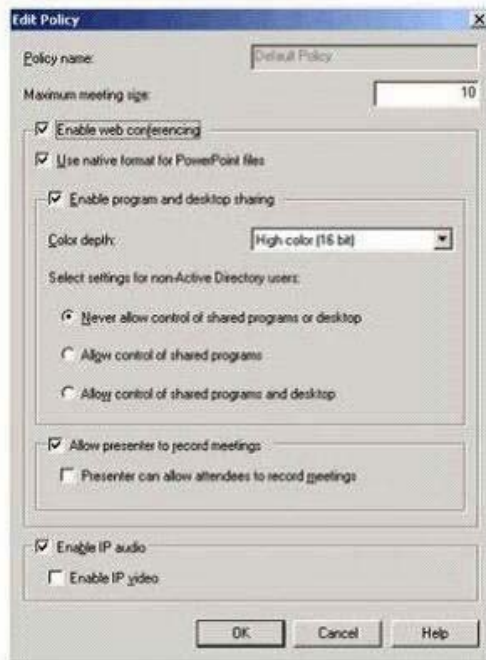
configuration support?

- A. A total of seven calls will be supported in either direction by using Wideband codec.
- B. A maximum of three calls will be supported in any one direction at any one time by using Wideband codec.
- C. A total of eight calls will be supported by using Siren.
- D. A total of six calls will be supported in either direction by using G.711.

Answer: B

QUESTION: 5

You are an IT professional who are specialized in Microsoft Office Communications Server 2007. Now you are employed in an international company which is named Wiikigo. You are in charge of providing technical support to your company. You have a Microsoft Office Communications Server (OCS) 2007 network deployed in your company. You configure the OCS 2007 network to meet the following requirements: All conferencing coordinators must be allowed to invite internal and federated users to the conferences. Only the conferencing coordinator named Hao Chen is able to invite anonymous users to the conferences. The Default policy settings exhibit shows the conferencing policy settings for the default policy. The Policy settings for Hao Chen exhibit bellow shows the conferencing policy settings for Hao Chen. The Global policy settings exhibit below shows the global conferencing policy settings for the OCS 2007 network. You check and find that Hao Chen is not able to invite anonymous users to the conferences. You have to make sure that Hao Chen is able to invite anonymous users without impacting the settings of the other conference coordinators. So what should you do to make sure of this?(Choose more than one)??



- A. A new conferencing policy named Anonymous should be created and it should be assigned to Hao Chen. Web conferencing should be enabled, and then the value of the Select settings for non-Active Directory users option should be set to Allow control of shared programs and desktop.
- B. The global policy setting for the Anonymous participants option should be set to Enforce per user.

- C. The Allow anonymous participants setting should be enabled for the user account of Hao Chen.
- D. Hao Chen should be instructed to enable the Open Authenticated access setting when the conference is set up.
- E. The global policy setting for the Anonymous participants option should be set to Allow users to invite anonymous participants.
- F. The default conferencing policy should be modified, and then the value of the Select settings for non-Active Directory users option should be set to Allow control of shared programs and desktop.

Answer: B, C

QUESTION: 6

You are an IT professional who are specialized in Microsoft Office Communications Server 2007. Now you are employed in an international company which is named Wiikigo. You are in charge of providing technical support to your company. You perform the deployment of Microsoft Office Communicator 2007 Phone Edition devices. Overlapping fixed digit normalization rules are used by the devices. You are testing the devices and find that when in the off-hook mode, the devices dial a number before it is completely entered. You have to enable three-digit fixed-digit dialing when the devices are in off-hook mode. So what action should you perform?

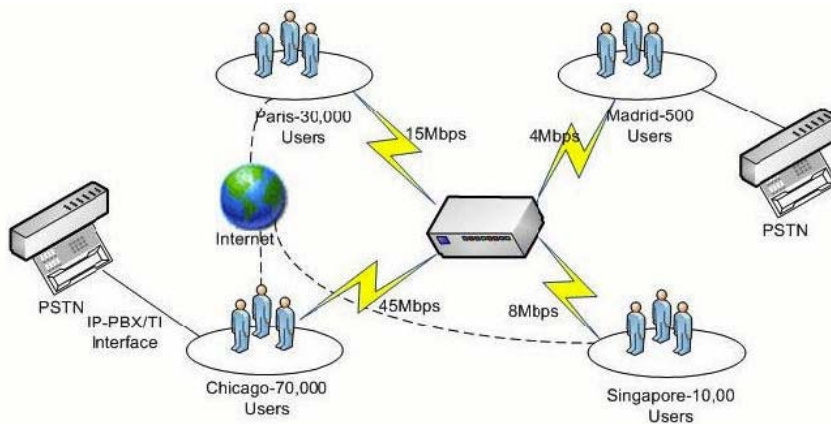
- A. Use the no-quick-dial feature of Enterprise Voice Route Helper to configure the dial plan.
- B. Client-side normalization should be enabled in Enterprise Voice Route Helper.
- C. The "t" prefix value after the "+" sign should be used in the normalization rule.
- D. The following normalization rule should be used during the testing phase. $\wedge(\{d\{1,1\}\})\$$
Pre Pend +1\$1

Answer: A

QUESTION: 7

You are an IT professional who are specialized in Microsoft Office Communications Server 2007. Now you are employed in an international company which is named Wiikigo. You are in charge of providing technical support to your company. You are testing the implementation of Microsoft Office Communications Server (OCS) 2007 Phone Edition devices at a site. The OCS 2007 network design exhibit below shows the OCS 2007 network design for the site. You receive report from users of the devices in the wiikigo.com domain.

They tell you that they are not able to view their Microsoft Outlook 2000 contacts when logging on to the OCS 2007 network. You have to make sure that users in the wiikigo.com domain are able to use the OCS 2007 Phone Edition devices to make direct calls. What action should you perform to make sure of this? (Choose more than one)



- A. Use the following http prefix to access these URLs from Microsoft Internet Explorer 7.0:
<https://wiikigo.com/autodiscover/autodiscover.xml>
<https://autodiscover.wiikigo.com/autodiscover/autodiscover.xml>. Confirm whether you receive a 600 Invalid request XML response from either request type.
- B. In order to make sure of this, you have to verify the validity of the external certificate on the Exchange Server 2007 Client Access server.
- C. In order to make sure of this, you have to verify that the correct Active Directory Service Connection Points (SCP) and DNS SRV records exist.
- D. In order to make sure of this, you have to run `exchucutil.ps1` on the Microsoft Exchange Server 2007 Unified Messaging servers and `ocsumutil.exe` on the OCS 2007 Enterprise Edition servers.
- E. In order to make sure of this, you have to verify that DNS A records for `wiikigo.com` and `autodiscover.wiikigo.com` exist and that they point to the Exchange Server 2007 Client Access servers.
- F. In order to make sure of this, you have to verify that DNS A records for `wiikigo.com` and `autodiscover.wiikigo.com` exist and that they point to the Exchange Server 2007 Unified Messaging servers.

Answer: A, B, E

Pass4SureOfficial.com Lifetime Membership Features;

- Pass4SureOfficial Lifetime Membership Package includes over **2500** Exams.
- **All** exams Questions and Answers are included in package.
- **All** Audio Guides are included **free** in package.
- **All** Study Guides are included **free** in package.
- **Lifetime** login access.
- Unlimited download, no account expiry, no hidden charges, just one time \$99 payment.
- **Free updates** for Lifetime.
- **Free Download Access** to All new exams added in future.
- Accurate answers with explanations (If applicable).
- Verified answers researched by industry experts.
- Study Material **updated** on regular basis.
- Questions, Answers and Study Guides are downloadable in **PDF** format.
- Audio Exams are downloadable in **MP3** format.
- **No authorization** code required to open exam.
- **Portable** anywhere.
- 100% success **Guarantee**.
- **Fast**, helpful support 24x7.

View list of All exams (Q&A) downloads

<http://www.pass4sureofficial.com/allexams.asp>

View list of All Study Guides (SG) downloads

<http://www.pass4sureofficial.com/study-guides.asp>

View list of All Audio Exams (AE) downloads

<http://www.pass4sureofficial.com/audio-exams.asp>

Download All Exams Samples

<http://www.pass4sureofficial.com/samples.asp>

To purchase \$99 Lifetime Full Access Membership click here

<http://www.pass4sureofficial.com/purchase.asp>

3COM	CompTIA	Filemaker	IBM	LPI	OMG	Sun
ADOBE	ComputerAssociates	Fortinet	IISFA	McAfee	Oracle	Sybase
APC	CWNP	Foundry	Intel	McData	PMI	Symantec
Apple	DELL	Fujitsu	ISACA	Microsoft	Polycom	TeraData
BEA	ECCouncil	GuidanceSoftware	ISC2	Mile2	RedHat	TIA
BICSI	EMC	HDI	ISEB	NetworkAppliance	Sair	Tibco
CheckPoint	Enterasys	Hitachi	ISM	Network-General	SASInstitute	TruSecure
Cisco	ExamExpress	HP	Juniper	Nokia	SCP	Veritas
Citrix	Exin	Huawei	Legato	Nortel	See-Beyond	Vmware
CIW	ExtremeNetworks	Hyperion	Lotus	Novell	SNIA	

