

# 70-446

## Microsoft

### *PRO: Designing a Business Intelligence Infrastructure by Using Microsoft SQL Server 2005*

Visit: <http://www.pass4sureofficial.com/exams.asp?examcode=70-446>

Pass4sureofficial.com is a reputable IT certification examination guide, study guides and audio exam provider, we not only ensure that you pass your 70-446 exam in first attempt, but also you can get a high score to acquire Microsoft certification.

If you use pass4sureofficial 70-446 Certification questions and answers, you will experience actual 70-446 exam questions/answers. We know exactly what is needed and have all the exam preparation material required to pass the exam. Our Microsoft exam prep covers over 95% of the questions and answers that may be appeared in your 70-446 exam. Every point from pass4sure 70-446 PDF, 70-446 review will help you take Microsoft 70-446 exam much easier and become Microsoft certified. All the Questions/Answers are taken from real exams.

Here's what you can expect from the Pass4sureOfficial Microsoft 70-446 course:

- \* Up-to-Date Microsoft 70-446 questions taken from the real exam.
- \* 100% correct Microsoft 70-446 answers you simply can't find in other 70-446 courses.
- \* All of our tests are easy to download. Your file will be saved as a 70-446 PDF.
- \* Microsoft 70-446 brain dump free content featuring the real 70-446 test questions.

Microsoft 70-446 certification exam is of core importance both in your Professional life and Microsoft certification path. With Microsoft certification you can get a good job easily in the market and get on your path for success. Professionals who passed Microsoft 70-446 exam training are an absolute favorite in the industry. You will pass Microsoft 70-446 certification test and career opportunities will be open for you.



## Case Study # 1:

### BACKGROUND

Fabrikam, Inc. is a manufacturing company that provides components for the engineering industry. Fabrikam has a sister company named Contoso, Ltd.

Work orders are processed by the following departments:

- The Production department handles request for components that are not in stock.
- The Warehouse department handles the storage and stock management of pre-manufactured components.
- The Packaging department handles the packaging of stock in the warehouse or the production department.
- The Distribution department handles the delivery of orders to clients.

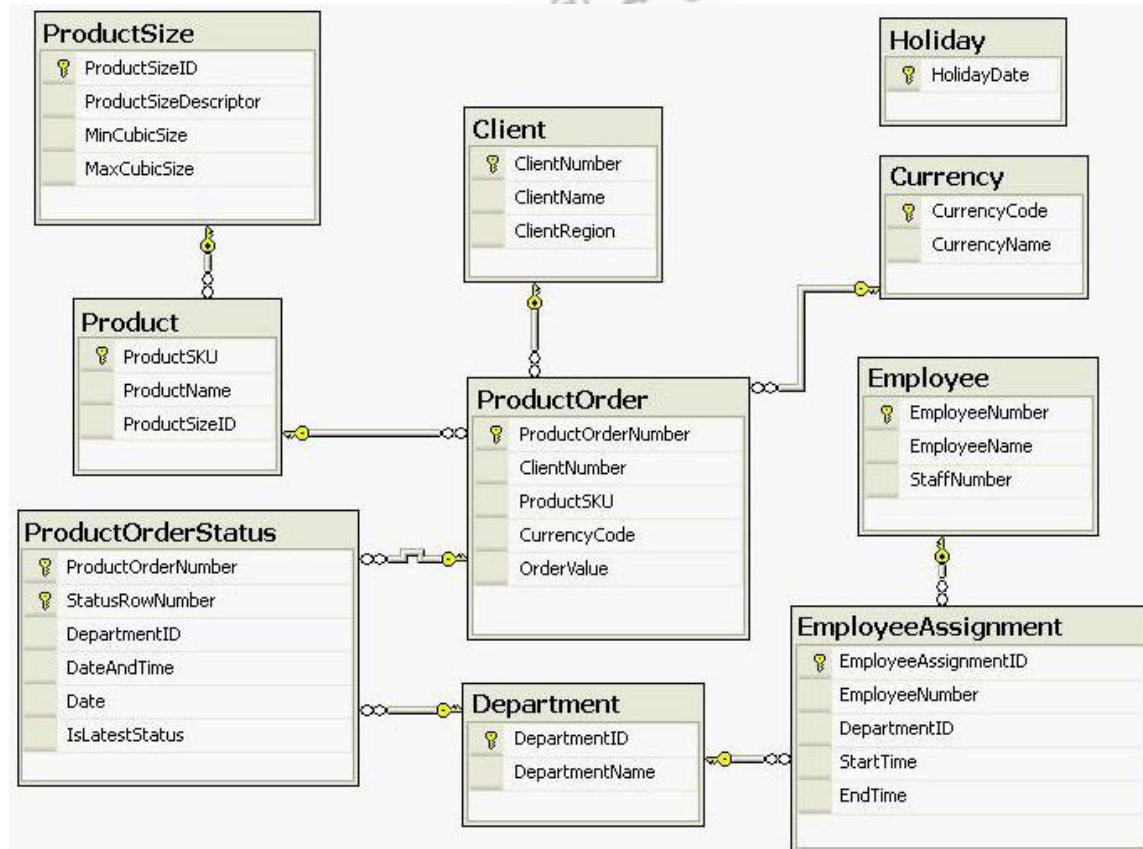
The company uses a flexible resourcing structure where individual employees can be reassigned between departments. Productivity is higher when specific groups of staff members are assigned to a particular department.

### EXISTING ENVIRONMENT

Fabrikam uses a Microsoft SQL Server 2005 database named FabrikamSQLDB to control and route client requests as work orders to the respective department.

New Client and ProductOrder records can be added to the FabrikamSQLDB database throughout the day. These records must be reflected correctly in any reports with zero latency.

The FabrikamSQLDB schema is shown in the following exhibit.



The performance of a department is measured against the following factors:

- Time to resolve a work order
- Number of work orders completed in a given period

### **Existing SSAS Solution**

Fabrikam uses a live Microsoft SQL Server 2005 Analysis Services (SSAS) database named FabrikamASDB. At present, the company processes the Fabrikam SSAS solution every evening. This processing takes three hours.

The Analysis Server Query Log is enabled.

The SSAS solution contains the following objects:

- A data source view. The data source view within the FabrikamASDB database sources data from the FabrikamSQLDB database.
- A cube named FabrikamCube. FabrikamCube exists within the FabrikamASDB database.

FabrikamCube contains the following measure groups:

- The ProductOrder measure group. This measure group is based on the ProductOrder table.
  - The ProductOrder measure group has Regular relationships to the Client, Currency, and Product dimensions.
  - The ProductOrder measure group uses real-time ROLAP that has no aggregations.
  - Reports against the ProductOrder measure group currently tend to perform poorly when aggregates are produced across a large range of data.
  - Users have drillthrough capability to individual rows within the ProductOrder measure group.
- The ProductOrderStatus measure group. This measure group is based on the ProductOrderStatus table.
  - The ProductOrderStatus measure group has approximately 20 million rows.
  - The ProductOrderStatus measure group is split into the following two partitions:
    - The CurrentDay partition. This partition is designed to contain all order status data for the current working day and any future-dated orders.
    - The Historical partition. This partition is designed to contain all historical data prior to the current working day.
  - Data within each partition is filtered by a query. Each query contains dates when the measure group was partitioned.
  - Data older than the current working day is used within highly aggregated reports.
  - Data for the current working day is used for individual order status reviews.
- The EmployeeAssignment measure group. This measure group is based on the EmployeeAssignment table.
  - Records are added to the EmployeeAssignment data table continuously throughout the day.

FabrikamCube contains the following dimensions:

- A Client dimension. Clients are divided into three regions: North, South, and West. Each region is stored within the Region attribute of the Client dimension.

### **Case Study # 1 (Questions):**

#### **Question: 1**

You need to ensure the Client dimension is able to support new orders and new client records. Which setting should you configure?

- A. ROLAP storage
- B. Lazy aggregations
- C. Write Enabled property
- D. Unknown Member functionality

**Answer: A**

**Question: 2**

You need to meet the requirements of the accounts team.  
What should you do?

- A. Set the Dimension type to Currency.
- B. Set the Currency member name as a unique attribute.
- C. Hide non-leaf data within the Currency dimension key attribute.
- D. Disable the All member of the Currency dimension key attribute.

**Answer: D**

**Question: 3**

You need to make structural changes to the cube. You also need to ensure that appropriate aggregations are created after the changes are made.  
What should you do?

- A. Record a weeks user activity by using SQL Profiler. Apply structural changes. Replay the activity and then run the Usage Based Optimization Wizard.
- B. Apply structural changes. Run the Database Engine Tuning Advisor.
- C. Apply structural changes. Run the Usage Based Optimization Wizard.
- D. Record a weeks user activity by using SQL Profiler. Apply structural changes. Run the Database Engine Tuning Advisor.

**Answer: A**

**Question: 4**

You need to select appropriate processing methods for the EmployeeAssignment measure group and the Employee dimension.  
Which method should you choose?

- A. Run a Process Update against the Employee dimension. Run a Process Full against the EmployeeAssignment measure group.
- B. Run a Process Full against the EmployeeAssignment measure group. Run a Process Update against the Employee dimension.
- C. Run a Process Full against the Employee dimension. Run a Process Incremental against the EmployeeAssignment measure group.
- D. Run a Process Incremental against the EmployeeAssignment measure group. Run a Process Full against the Employee dimension.

**Answer: A**

**Question: 5**

You need to ensure that the new sales manager is able to view clients within only the North and South regions.  
What should you do?

- A. Add a Denied member set for the West clients to NorthRole.

- B. Add an Allowed member set for the South clients to NorthRole.
- C. Create a new role for the sales manager and add a Denied member set for the South clients.
- D. Create a new role for the sales manager and add an Allowed member set for the South clients.  
Remove the sales manager from SouthAndWestRole.

**Answer: D**

**Question: 6**

You need to meet the business requirements of the packaging department.  
What should you do?

- A. Add the ProductSize data table and the ProductSizeDescriptor column to the Product dimension. Set the order of the ProductSKU attribute to the ProductSizeDescriptor column.
- B. Add the ProductSize data table as a dimension and then add this dimension to the cube as a Referenced dimension. Set the order of the key attribute of the ProductSize dimension to the ProductSizeDescriptor column.
- C. Add the ProductSize data table and the ProductSizeDescriptor column to the Product dimension. Create a user-defined hierarchy that has ProductSKU as the top-level attribute and ProductSizeDescriptor as the bottom-level attribute.
- D. Add the ProductSize data table as a dimension and then add this dimension to the cube as a Referenced dimension. Create a user-defined hierarchy within the ProductSize dimension. Set the ProductSizeDescriptor attribute as the top-level attribute.

**Answer: A**

**Question: 7**

You need to ensure the Order Control team is able to track the number of orders that reach the production department.  
What should you do?

- A. Create a new Time dimension based on the Holiday table. Use derived columns for the month and the year.
- B. Create a Server Time dimension. Within this dimension, enable the time periods year, month, and date.  
Select the Additional Manufacturing calendar option.
- C. Create a new Time dimension based on the date values within the ProductOrderStatus table. Flag those days on which no orders were received as Holiday.
- D. Create a new Time dimension based on a data source view named query. Derive the data for this data source view from unique dates within the ProductOrderStatus table. Use a subquery to identify the holidays and derived columns for the month and the year.

**Answer: D**

**Question: 8**

You need to design a storage mode for the ProductOrderStatus measure group.  
What should you do?

- A. Use ROLAP for the Historical partition and MOLAP for the CurrentDay partition.
- B. Use MOLAP for the Historical partition and ROLAP for the CurrentDay partition.
- C. Use ROLAP for the Historical partition and Automatic MOLAP for the CurrentDay partition.
- D. Use HOLAP for the Historical partition and Low-latency MOLAP for the CurrentDay partition.

**Answer: B**

**Question: 9**

You need to maintain the partitions on the ProductOrderStatus measure group. What should you do?

- A. Create a Microsoft SQL Server 2005 Integration Services (SSIS) package that alters the partition queries and processes aggregated partitions every evening.
- B. Enable proactive caching on the partitions. Set the cache to update periodically with a latency of 24 hours.
- C. Set the rebuild interval of the partitions to 36 hours. Create a Microsoft SQL Server 2005 Integration Services (SSIS) package that processes aggregated partitions every evening.
- D. Enable proactive caching on the ProductOrderStatus measure group. Set scheduled polling that re-processes the measure group whenever the system dates change.

**Answer: A**

**Question: 10**

You need to ship a copy of the FabrikamASDB metadata to Contoso, Ltd. What should you do?

- A. Use the Synchronize Database Wizard.
- B. Describe the FabrikamASDB database in an XML for Analysis (XMLA) script. Ship the script to Contoso, Ltd.
- C. Copy the folder structure of the live SSAS solution to a compressed file. Ship the compressed file to Contoso, Ltd.
- D. Backup the FabrikamASDB database. Run a Process Full on the restored database. Ship the database to Contoso, Ltd.

**Answer: B**

**Question: 11**

You need to help the HR team improve the resource allocation process. What should you do?

- A. Perform data mining regression analysis to identify the correlation between productivity and specific employee groups.
- B. Set the GroupingBehaviour property within the Employee dimension.
- C. Partition the EmployeeAssignment measure group into groups by department.
- D. Use the Fuzzy Grouping task in Microsoft SQL Server 2005 Integration Services (SSIS).

**Answer: A**

## Pass4SureOfficial.com Lifetime Membership Features;

- Pass4SureOfficial Lifetime Membership Package includes over **2500** Exams.
- **All** exams Questions and Answers are included in package.
- **All** Audio Guides are included **free** in package.
- **All** Study Guides are included **free** in package.
- **Lifetime** login access.
- Unlimited download, no account expiry, no hidden charges, just one time \$99 payment.
- **Free updates** for Lifetime.
- **Free Download Access** to All new exams added in future.
- Accurate answers with explanations (If applicable).
- Verified answers researched by industry experts.
- Study Material **updated** on regular basis.
- Questions, Answers and Study Guides are downloadable in **PDF** format.
- Audio Exams are downloadable in **MP3** format.
- **No authorization** code required to open exam.
- **Portable** anywhere.
- 100% success **Guarantee**.
- **Fast**, helpful support 24x7.

View list of All exams (Q&A) downloads

<http://www.pass4sureofficial.com/allexams.asp>

View list of All Study Guides (SG) downloads

<http://www.pass4sureofficial.com/study-guides.asp>

View list of All Audio Exams (AE) downloads

<http://www.pass4sureofficial.com/audio-exams.asp>

Download All Exams Samples

<http://www.pass4sureofficial.com/samples.asp>

To purchase \$99 Lifetime Full Access Membership click here

<http://www.pass4sureofficial.com/purchase.asp>

3COM	CompTIA	Filemaker	IBM	LPI	OMG	Sun
ADOBE	ComputerAssociates	Fortinet	IISFA	McAfee	Oracle	Sybase
APC	CWNP	Foundry	Intel	McData	PMI	Symantec
Apple	DELL	Fujitsu	ISACA	Microsoft	Polycom	TeraData
BEA	ECCouncil	GuidanceSoftware	ISC2	Mile2	RedHat	TIA
BICSI	EMC	HDI	ISEB	NetworkAppliance	Sair	Tibco
CheckPoint	Enterasys	Hitachi	ISM	Network-General	SASInstitute	TruSecure
Cisco	ExamExpress	HP	Juniper	Nokia	SCP	Veritas
Citrix	Exin	Huawei	Legato	Nortel	See-Beyond	Vmware
CIW	ExtremeNetworks	Hyperion	Lotus	Novell	SNIA	

