

# 70-444

## Microsoft

### *PRO: Optimizing and Maintaining a Database Administration Solution by Using Microsoft SQL Server 2005*

Visit: <http://www.pass4sureofficial.com/exams.asp?examcode=70-444>

Pass4sureofficial.com is a reputable IT certification examination guide, study guides and audio exam provider, we not only ensure that you pass your 70-444 exam in first attempt, but also you can get a high score to acquire Microsoft certification.

If you use pass4sureofficial 70-444 Certification questions and answers, you will experience actual 70-444 exam questions/answers. We know exactly what is needed and have all the exam preparation material required to pass the exam. Our Microsoft exam prep covers over 95% of the questions and answers that may be appeared in your 70-444 exam. Every point from pass4sure 70-444 PDF, 70-444 review will help you take Microsoft 70-444 exam much easier and become Microsoft certified. All the Questions/Answers are taken from real exams.

Here's what you can expect from the Pass4sureOfficial Microsoft 70-444 course:

- \* Up-to-Date Microsoft 70-444 questions taken from the real exam.
- \* 100% correct Microsoft 70-444 answers you simply can't find in other 70-444 courses.
- \* All of our tests are easy to download. Your file will be saved as a 70-444 PDF.
- \* Microsoft 70-444 brain dump free content featuring the real 70-444 test questions.

Microsoft 70-444 certification exam is of core importance both in your Professional life and Microsoft certification path. With Microsoft certification you can get a good job easily in the market and get on your path for success. Professionals who passed Microsoft 70-444 exam training are an absolute favorite in the industry. You will pass Microsoft 70-444 certification test and career opportunities will be open for you.



**QUESTION 1:**

You work as the database administrator at Certkiller .com. The Certkiller .com network consists of a single Active Directory domain named Certkiller .com. All servers on the Certkiller .com network run Windows Server 2003 and all client computers run Windows XP Professional.

The Certkiller .com network contains a SQL Server 2005 database server named Certkiller -DB01. Certkiller -DB01 hosts a database named CK\_Sales that stores sales data for the company. Certkiller -DB01 also hosts two financial applications. You need to optimize the performance of Certkiller -DB01 and increase the performance of the two financial applications. You need to modify the SQL Server configuration to accomplish this goal.

What should you do?

- A. Configure the max worker threads server option.
- B. Configure the min memory per query server option.
- C. Configure the max server memory server option.
- D. Configure the min server memory server option.

Answer: C

Explanation: The max server memory option is used to specify the maximum amount of system memory that SQL Server 2005 is allowed to consume. Setting this option will ensure that the SQL Server 2005 does not consume all the available memory and can be used to ensure that sufficient memory is remains available for the other applications to run.

Incorrect Answers:

A: The max worker threads option is used to specify the number of processor threads that are used to supported users connected to SQL Server. This does not assist in optimizing performance for other applications.

B:

The min memory per query option is used to specify the minimum amount of memory that is allocated to the execution of a query. This is useful if there are several concurrent queries but it does not assist in optimizing performance for other applications.

D: The min server memory option is used to ensure that SQL Server 2005 does not release memory below the min server memory value once it is reached. This ensures that SQL Server 2005 always has sufficient memory but it will not ensure that the other applications have sufficient memory.

Reference:

Microsoft SQL Server 2005 Books Online (2007), Index: max server memory option

Microsoft SQL Server 2005 Books Online (2007), Index: min server memory option

Microsoft SQL Server 2005 Books Online (2007), Index: min memory per query option

Microsoft SQL Server 2005 Books Online (2007), Index: max worker threads option

---

**QUESTION 2:**

You work as the database administrator at Certkiller .com. The Certkiller .com network consists of a single Active Directory domain named Certkiller .com. All servers on the Certkiller .com network run Windows Server 2003 and all client computers run Windows XP Professional.

The Certkiller .com network contains a SQL Server 2005 database server named Certkiller -DB01. Certkiller -DB01 hosts a database named CK\_Sales that stores sales data for the company. Certkiller -DB01 also hosts two financial applications. Several Certkiller .com users in the Sales department complain that queries against the CK\_Sales database perform very poorly at times. You use System Monitor to monitor the performance of by using Certkiller -DB01 and discover that SQL Server 2005 does not have sufficient memory to run efficiently. You need to ensure that SQL Server 2005 always has sufficient memory to run efficiently.

What should you do?

- A. Decrease the min memory per query server option.
- B. Increase the min server memory server option.
- C. Increase the max worker threads server option.
- D. Decrease the max server memory server option.

Answer: B

Explanation:

The min server memory option is used to ensure that SQL Server 2005 does not release memory below the min server memory value once it is reached. This ensures that SQL Server 2005 always has sufficient memory. By default, min server memory is set to 0.

Incorrect Answers:

A: The min memory per query option is used to specify the minimum amount of memory that is allocated to the execution of a query. This is useful if there are several concurrent queries. Decreasing this option will increase the possibility that the SQL Server 2005 will perform poorly.

C: The max worker threads option is used to specify the number of processor threads that are used to supported users connected to SQL Server. Increasing this option will not address the memory problem.

D: The max server memory option is used to specify the maximum amount of system memory that SQL Server 2005 is allowed to consume. Decreasing this option will increase the possibility that the SQL Server 2005 will perform poorly.

Reference:

Microsoft SQL Server 2005 Books Online (2007), Index: min server memory option

Microsoft SQL Server 2005 Books Online (2007), Index: min memory per query option

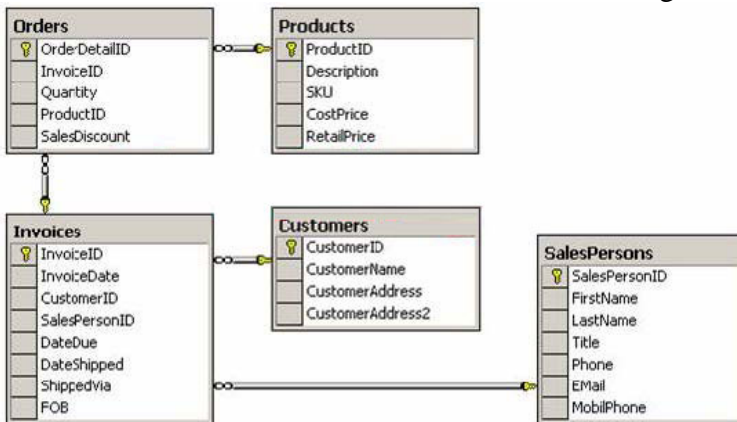
Microsoft SQL Server 2005 Books Online (2007), Index: max worker threads option

Microsoft SQL Server 2005 Books Online (2007), Index: max server memory option

---

**QUESTION 3:**

You work as the database administrator at Certkiller .com. The Certkiller .com network consists of a single Active Directory domain named Certkiller .com. All servers on the Certkiller .com network run Windows Server 2003 and all client computers run Windows XP Professional. The Certkiller .com network contains a SQL Server 2005 database server named Certkiller -DB01. Certkiller -DB01 hosts a database named CK\_Sales that stores sales data for the company. The tables in the CK\_Sales database are shown in the following database diagram.



The recent increase in database usage at the company has resulted in several Certkiller .com users complaining of timeouts when they try to retrieve sales orders from the CK\_Sales database. You need to determine whether partitioning the Orders table would improve database performance.

What should you do? (Each correct answer presents part of the solution. Choose TWO.)

- A. Run Database Engine Tuning Advisor.
- B. Create a performance log file to monitor SQL Server:Buffer Manager:Page reads/sec.
- C. Run SQL Server Profiler to replay the trace file and the log file.
- D. Use the SQL Server Profiler Tuning template to create a trace file.
- E. Create a performance log file to monitor Logical Disk: Disk Read Bytes/sec

Answer: A, D

Explanation:

You can use the Database Engine Tuning Advisor to determine whether indexing and partitioning of a table would improve database performance. The Database Engine Tuning Advisor analyzes a workload file that you can create by running SQL Server Profiler and creating a trace based on the SQL Server Profiler Tuning template.

Incorrect Answers:

B: The SQL Server:Buffer Manager:Page reads/sec counter is used to monitor the read activity on an instance of SQL Server. It does not help you determine whether partitioning a table will improve database performance.

C: You can use the SQL Server Profiler to analyze a trace file and a log file to determine

which queries are causing excessive resource utilization. However, this information does not help you determine whether partitioning a table will improve database performance. E: The Logical Disk: Disk Read Bytes/sec counter is used to monitor the read activity on a logical disk. It does not help you determine whether partitioning a table will improve database performance.

Reference:

Microsoft SQL Server 2005 Books Online (2007), Index: Database Engine Tuning Advisor [SQL Server]

Microsoft SQL Server 2005 Books Online (2007), Index: SQL Server Profiler

Microsoft SQL Server 2005 Books Online (2007), Index: performance counters [SQL Server]

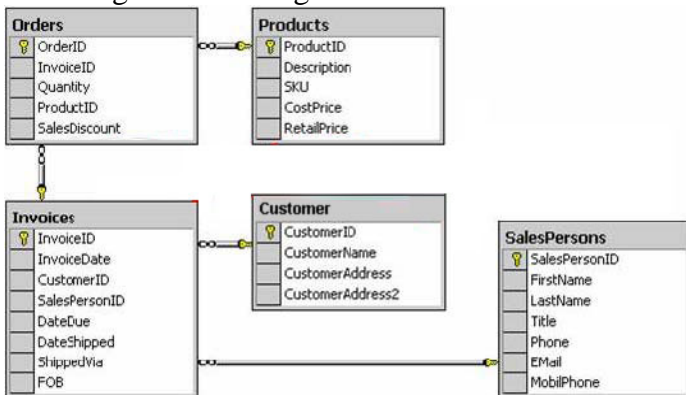
Microsoft SQL Server 2005 Books Online (2007), Index: max server memory option

---

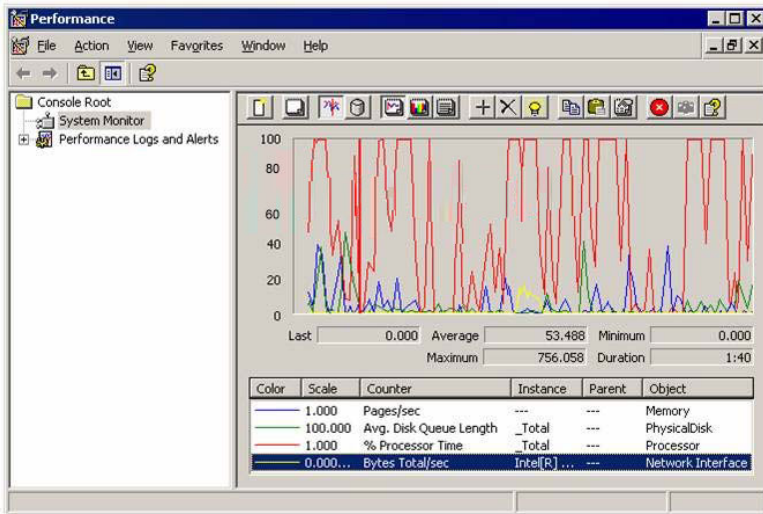
#### QUESTION 4:

You work as the database administrator at Certkiller .com. The Certkiller .com network consists of a single Active Directory domain named Certkiller .com. All servers on the Certkiller .com network run Windows Server 2003 and all client computers run Windows XP Professional.

The Certkiller .com network contains a SQL Server 2005 database server named Certkiller -DB01. Certkiller -DB01 hosts a database named CK\_Sales that stores sales data for the company. The tables in the CK\_Sales database are shown in the following database diagram.



Several Certkiller .com users start complaining of slow response time when they run queries against the CK\_Sales database. You run the sys.dm\_os\_schedulers view on Certkiller -DB01 and discover that the runnable\_tasks\_count is consistently at or above ten. You run System Monitor on Certkiller -DB01 and receive the output as shown in the exhibit.



You need to improve database performance.  
What should you do?

- A. Increase the Random Access Memory (RAM).
- B. Add an additional processor.
- C. Upgrade the disk subsystem.
- D. Use the Database Engine Tuning Advisor to suggest new indexes.

Answer: B

Explanation: The Processor:% Processor Time counter in the exhibit indicates that the processor is often running at over 80%. This indicates that the processor is causing a bottleneck. Adding an additional processor to the system will improve overall system performance.

Incorrect Answers:

A: The Memory:Avg. Disk Queue Length counter in the exhibit is low. This indicates that the RAM is not causing a bottleneck. Therefore, adding additional RAM to the system will not improve overall system performance.

C: The PhysicalDisk:Pages/sec counter in the exhibit is low. This indicates that the disk subsystem is not causing a bottleneck. Therefore, upgrading the disk subsystem will not improve overall system performance.

D: The Processor:% Processor Time counter in the exhibit indicates that the processor is often running at over 80%. This indicates that the processor is causing a bottleneck. Indexing the tables will not reduce the load on the processor and will not improve overall system performance.

Reference:

Microsoft SQL Server 2005 Books Online (2007), Index: CPU [SQL Server], monitoring

Microsoft SQL Server 2005 Books Online (2007), Index: Database Engine Tuning Advisor [SQL Server]

You work as the database administrator at Certkiller .com. The Certkiller .com network consists of a single Active Directory domain named Certkiller .com. All servers on the Certkiller .com network run Windows Server 2003 and all client computers run Windows XP Professional. You use a client computer named Certkiller -WS444.

The Certkiller .com network contains a SQL Server 2005 database server named Certkiller -DB01. Certkiller -DB01 hosts a database named CK\_Products. The recent increase in database usage at the company has resulted in several Certkiller .com users complaining of poor query performance and query timeouts try to retrieve data from the CK\_Products database. You need to determine the cause of the poor performance. You need to minimize the effect of your monitoring strategy on system performance.

What should you do?

- A. Run the SQL Server Profiler from Certkiller -WS444 and create a trace that monitors Certkiller -DB01. Save the trace file to a table.
- B. Run the Performance tool on Certkiller -DB01 to create a log that monitors Certkiller -DB01. Save the log file to a folder on Certkiller -DB01.
- C. Run the SQL Server Profiler on Certkiller -DB01 and create a trace that monitors Certkiller -DB01. Save the trace file to a table.
- D. Run the Performance tool on Certkiller -WS444 to create a log that monitors Certkiller -DB01. Save the log file to a folder on Certkiller -WS444.

Answer: D

Explanation: You can use the Windows Performance tool on a client computer to monitor system performance on the database server without negatively affecting the performance of the database server. You can use the Windows Performance tool to create a log on the client computer that you can analyze to determine the cause of a resource bottleneck.

Incorrect Answers:

A, C: SQL Server Profiler is used to trace SQL Server events. It is not used to troubleshoot resource bottlenecks.

B: You should run the Windows Performance tool from you client computer and save the log file to your computer. This will reduce the impact of monitoring on the database server.

Reference:

Microsoft SQL Server 2005 Books Online (2007), Index: CPU [SQL Server], monitoring  
Microsoft SQL Server 2005 Books Online (2007), Index: Database Engine Tuning Advisor [SQL Server]

---

## QUESTION 6:

You work as the database administrator at Certkiller .com. The Certkiller .com network consists of a single Active Directory domain named Certkiller .com. All servers on the Certkiller .com network run Windows Server 2003 and all client

## Pass4SureOfficial.com Lifetime Membership Features;

- Pass4SureOfficial Lifetime Membership Package includes over **2500** Exams.
- **All** exams Questions and Answers are included in package.
- **All** Audio Guides are included **free** in package.
- **All** Study Guides are included **free** in package.
- **Lifetime** login access.
- Unlimited download, no account expiry, no hidden charges, just one time \$99 payment.
- **Free updates** for Lifetime.
- **Free Download Access** to All new exams added in future.
- Accurate answers with explanations (If applicable).
- Verified answers researched by industry experts.
- Study Material **updated** on regular basis.
- Questions, Answers and Study Guides are downloadable in **PDF** format.
- Audio Exams are downloadable in **MP3** format.
- **No authorization** code required to open exam.
- **Portable** anywhere.
- 100% success **Guarantee**.
- **Fast**, helpful support 24x7.

View list of All exams (Q&A) downloads

<http://www.pass4sureofficial.com/allexams.asp>

View list of All Study Guides (SG) downloads

<http://www.pass4sureofficial.com/study-guides.asp>

View list of All Audio Exams (AE) downloads

<http://www.pass4sureofficial.com/audio-exams.asp>

Download All Exams Samples

<http://www.pass4sureofficial.com/samples.asp>

To purchase \$99 Lifetime Full Access Membership click here

<http://www.pass4sureofficial.com/purchase.asp>

3COM	CompTIA	Filemaker	IBM	LPI	OMG	Sun
ADOBE	ComputerAssociates	Fortinet	IISFA	McAfee	Oracle	Sybase
APC	CWNP	Foundry	Intel	McData	PMI	Symantec
Apple	DELL	Fujitsu	ISACA	Microsoft	Polycom	TeraData
BEA	ECCouncil	GuidanceSoftware	ISC2	Mile2	RedHat	TIA
BICSI	EMC	HDI	ISEB	NetworkAppliance	Sair	Tibco
CheckPoint	Enterasys	Hitachi	ISM	Network-General	SASInstitute	TruSecure
Cisco	ExamExpress	HP	Juniper	Nokia	SCP	Veritas
Citrix	Exin	Huawei	Legato	Nortel	See-Beyond	Vmware
CIW	ExtremeNetworks	Hyperion	Lotus	Novell	SNIA	

