

642-845

Cisco

ONT - Optimizing Converged Cisco Networks

Visit: <http://www.pass4sureofficial.com/exams.asp?examcode=642-845>

Pass4sureofficial.com is a reputable IT certification examination guide, study guides and audio exam provider, we not only ensure that you pass your 642-845 exam in first attempt, but also you can get a high score to acquire Cisco certification.

If you use pass4sureofficial 642-845 Certification questions and answers, you will experience actual 642-845 exam questions/answers. We know exactly what is needed and have all the exam preparation material required to pass the exam. Our Cisco exam prep covers over 95% of the questions and answers that may be appeared in your 642-845 exam. Every point from pass4sure 642-845 PDF, 642-845 review will help you take Cisco 642-845 exam much easier and become Cisco certified. All the Questions/Answers are taken from real exams.

Here's what you can expect from the Pass4sureOfficial Cisco 642-845 course:

- * Up-to-Date Cisco 642-845 questions taken from the real exam.
- * 100% correct Cisco 642-845 answers you simply can't find in other 642-845 courses.
- * All of our tests are easy to download. Your file will be saved as a 642-845 PDF.
- * Cisco 642-845 brain dump free content featuring the real 642-845 test questions.

Cisco 642-845 certification exam is of core importance both in your Professional life and Cisco certification path. With Cisco certification you can get a good job easily in the market and get on your path for success. Professionals who passed Cisco 642-845 exam training are an absolute favorite in the industry. You will pass Cisco 642-845 certification test and career opportunities will be open for you.



Question: 1

Which three characteristics of the traffic flow are taken into consideration when the QoS-for-VPNs feature (QoS pre-classify) provides packet classification and applies appropriate QoS service on tunnel interfaces? (Choose three.)

- A. IP precedence bits
- B. DSCP bits
- C. Original port numbers
- D. DE bits
- E. Source IP address
- F. Destination IP address

Answer: C, E, F

Question: 2

Which two QoS statements are true about the use of the SDM QoS wizard? (Choose two.)

- A. Business-critical traffic includes VoIP and voice signaling packets.
- B. SDM can be used to configure a basic QoS policy for incoming traffic on WAN interfaces and IPsec tunnels.
- C. SDM can provide QoS for real-time traffic and business-critical traffic.
- D. SDM creates a custom-queuing (CQ) or a priority-queuing (PQ) policy.
- E. SDM creates a low latency queuing (LLQ) service policy with its associated classes.
- F. When allocating bandwidth, values can be entered in either bandwidth percentage or kilobytes per second (KBps).

Answer: C, E

Question: 3

Which two statements about Cisco AutoQoS are true? (Choose two.)

- A. A QoS service policy must already be enabled on the interface before Cisco AutoQoS can be enabled.
- B. Any interface at or below 1.54 Mbps is classified as a low-speed interface.
- C. AutoQoS uses Cisco network-based application recognition (NBAR) to identify various applications and traffic types.
- D. Cisco Express Forwarding (CEF) must be enabled at the interface or ATM PVC.
- E. Cisco NBAR is a prerequisite for CEF.
- F. On a serial interface, before AutoQoS is enabled, the clock rate command must be used to specify a bandwidth other than the default 1.54Mbps.

Answer: C, D

Question: 4

When a router converts analog signals to digital signals as part of the VoIP process, it performs four steps.

Which set of steps contains the steps in their correct sequence?

- A. encoding
optional compression
quantization
sampling
- B. encoding
quantization

- optional compression
- sampling
- C. optional compression
- encoding
- sampling
- quantization
- D. optional compression
- sampling
- encoding
- quantization
- E. sampling
- quantization
- encoding
- optional compression
- F. sampling
- quantization
- optional compression
- encoding

Answer: E

Question: 5

What are three staid Extensible Authentication Protocol (EAP) types? (Choose three.)

- A. LEAP
- B. EAP-FAST
- C. EAP-TLS
- D. EAP-AES
- E. WEAP
- F. WEP

Answer: A, B, C

Question: 6

What are three benefits of the Wireless LAN Solution Engine (WLSE)? (Choose three.)

- A. The decentralized nature of WLSE helps reduce the time and resources that are required to manage a large number of WLAN devices.
- B. WLSE helps simplify large-scale deployments by providing automatic configuration of new APs.
- C. WLSE minimizes security vulnerabilities by providing security policy misconfiguration alerts and rogue AP detection.
- D. WLSE provides AP utilization and client association reports, features which help with capacity planning.
- E. WLSE can respond to required changes that are requested by APs.
- F. WLSE increases productivity through customization with three possible levels of management: lightweight, extended, and advanced.

Answer: B, C, D

Question: 7

What is link fragmentation and interleaving (LFI)?

- A. LFI is a QoS mechanism that allots bandwidth and enables the differentiation of traffic according to a policy.

- B. LFI is a Layer 2 technique in which header information is sent only at the beginning of the session, stored in a dictionary, and then referenced in later packets by a short dictionary index.
- C. LFI is a Layer 3 technique in which header information is sent only at the beginning of the session, stored in a dictionary, and then referenced in later packets by a short dictionary index.
- D. LFI is a Layer 2 technique in which large frames are broken into small, equal-sized fragments, and transmitted over the link in an interleaved fashion.
- E. LEI is a Layer 2 technique in which smaller fragments are combined into large, equal-sized frames, and transmitted over the link in an interleaved fashion.

Answer: D

Question: 8

Which two statements about packet marking at the data link layer are true? (Choose two.)

- A. Through the use of DE markings, Frame Relay QoS supports up to 10 classes of service.
- B. Frames maintain their class of service (CoS) markings when transiting a non-802.1p link.
- C. IEEE 802.1p supports up to 10 class of service (CoS) markings.
- D. In an 802.1q frame, the 3-bit 802.1p priority field is used to identify the class of service (CoS) priority.
- E. The 802.1p CoS markings are preserved through the LAN, but are not maintained end to end.

Answer: D, E

Question: 9

Which two Cisco AutoQoS interface statements are true? (Choose two.)

- A. AutoQoS is supported on Frame Relay multipoint subinterfaces.
- B. AutoQoS is supported on low-speed ATM PVCs in point-to-point subinterfaces.
- C. AutoQoS is supported on serial PPP and HDLC interfaces.
- D. AutoQoS is supported only on Frame Relay main interfaces and not on any subinterface configuration.

Answer: B, C

Question: 10

Which two wireless security statements are true? (Choose two.)

- A. A TACACS+ server is required to implement 802.1x.
- B. MIC protects against man-in-the-middle and replay attacks.
- C. The 802.1x standard provides encryption services for wireless clients.
- D. The AES (symmetric block cipher) is specified in the IEEE 802.11i specification.
- E. The IEEE 802.11i specification uses RC4 as its encryption mechanism.
- F. WPA requires TKIP and AES as encryption methods.

Answer: B, D

Question: 11

Which two statements regarding the Wireless LAN Solution Engine (WLSE) are true? (Choose two.)

- A. To support fault and policy reporting, the WLSE requires a Wireless Control System (WCS).
- B. When WLSE detects an AP failure, it automatically increases the power and cell coverage of nearby APs.

- C. WLSE requires the 2700 location appliance to offer location tracking.
- D. WLSE can locate rogue APs and automatically shut them down.
- E. WLSE configuration is done using the command line interface (CLI) or a WEB based template.

Answer: B, D

Question: 12

Which two statements are true about traffic shaping and traffic policing? (Choose two.)

- A. Both traffic shaping and traffic policing cause retransmissions of connection-oriented protocols such as TCP.
- B. Both traffic shaping and traffic policing support the marking and re-marking of traffic.
- C. The effects of traffic shaping and traffic policing when configured on a router are applied to outgoing traffic.
- D. Traffic shaping queues excess traffic whereas traffic policing discards excess traffic.
- E. Traffic shaping allows the traffic to exceed the bit rate whereas traffic policing prevents the traffic from exceeding the bit rate.

Answer: C, D

Question: 13

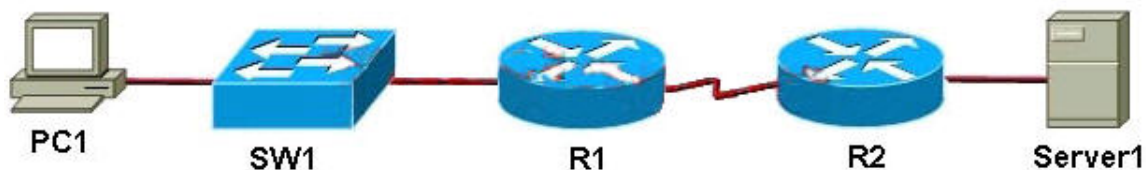
Which two queuing methods will allow a percentage of the available bandwidth to be allocated to each queue? (Choose two.)

- A. First-in, first-out queuing (FIFO)
- B. Priority queuing (PQ)
- C. Custom queuing (CQ)
- D. Weighted fair queuing (WFQ)
- E. Class-based WFQ (CBWFQ)
- F. Low latency queuing (LLQ)

Answer: E, F

Question: 14

Exhibit:



Which two QoS fields should be used by R1 and R2 to classify the traffic sent from PC1 to Server1? (Choose two.)

- A. CoS
- B. IP DSCP
- C. DE bit
- D. priority bits
- E. IP precedence

Answer: B, E

Question: 15

Which classification tool can be used to classify traffic based on the HTTP URL?

- A. Class-based policing
- B. Policy-based routing (PBR)
- C. Committed access rate (CAR)
- D. Network-based application recognition (NBAR)
- E. Dial peers

Answer: D

Question: 16

Which two statements are true about the function of CAC? (Choose two.)

- A. CAC provides guaranteed voice quality on a link.
- B. CAC artificially limits the number of concurrent voice calls.
- C. CAC is used to control the amount of bandwidth that is taken by a call on a link.
- D. CAC prevents oversubscription of WAN resources that is caused by too much voice traffic.
- E. CAC allows an unlimited number of voice calls while severely restricting, if necessary, other forms of traffic.
- F. CAC solves voice congestion problems by using QoS to give priority to UDP traffic.

Answer: B, D

Question: 17

Which two statements are true about the implementation of QoS? (Choose two.)

- A. Implementing DiffServ involves the configuration of RSVP.
- B. Implementing IntServ allows QoS to be performed by configuring only the ingress and egress devices.
- C. Implementing IntServ involves the utilization of RSVP.
- D. Traffic should be classified and marked by the core network devices.
- E. Traffic should be classified and marked as close to the edge of the network as possible.

Answer: C, E

Question: 18

What three types of interfaces do voice gateways use to connect to analog interfaces? (Choose three.)

- A. E and M
- B. E1 CCS
- C. FXS
- D. FXO
- E. serial
- F. T1 CAS

Answer: A, C, D

Question: 19

Which two Cisco router functional planes are protected by Control Plane Policing (CoPP)? (Choose two.)

- A. Data plane
- B. Control plane

Pass4SureOfficial.com Lifetime Membership Features;

- Pass4SureOfficial Lifetime Membership Package includes over **2500** Exams.
- **All** exams Questions and Answers are included in package.
- **All** Audio Guides are included **free** in package.
- **All** Study Guides are included **free** in package.
- **Lifetime** login access.
- Unlimited download, no account expiry, no hidden charges, just one time \$99 payment.
- **Free updates** for Lifetime.
- **Free Download Access** to All new exams added in future.
- Accurate answers with explanations (If applicable).
- Verified answers researched by industry experts.
- Study Material **updated** on regular basis.
- Questions, Answers and Study Guides are downloadable in **PDF** format.
- Audio Exams are downloadable in **MP3** format.
- **No authorization** code required to open exam.
- **Portable** anywhere.
- 100% success **Guarantee**.
- **Fast**, helpful support 24x7.

View list of All exams (Q&A) downloads

<http://www.pass4sureofficial.com/allexams.asp>

View list of All Study Guides (SG) downloads

<http://www.pass4sureofficial.com/study-guides.asp>

View list of All Audio Exams (AE) downloads

<http://www.pass4sureofficial.com/audio-exams.asp>

Download All Exams Samples

<http://www.pass4sureofficial.com/samples.asp>

To purchase \$99 Lifetime Full Access Membership click here

<http://www.pass4sureofficial.com/purchase.asp>

3COM	CompTIA	Filemaker	IBM	LPI	OMG	Sun
ADOBE	ComputerAssociates	Fortinet	IISFA	McAfee	Oracle	Sybase
APC	CWNP	Foundry	Intel	McData	PMI	Symantec
Apple	DELL	Fujitsu	ISACA	Microsoft	Polycom	TeraData
BEA	ECCouncil	GuidanceSoftware	ISC2	Mile2	RedHat	TIA
BICSI	EMC	HDI	ISEB	NetworkAppliance	Sair	Tibco
CheckPoint	Enterasys	Hitachi	ISM	Network-General	SASInstitute	TruSecure
Cisco	ExamExpress	HP	Juniper	Nokia	SCP	Veritas
Citrix	Exin	Huawei	Legato	Nortel	See-Beyond	Vmware
CIW	ExtremeNetworks	Hyperion	Lotus	Novell	SNIA	

