

642-832

Cisco

Troubleshooting and maintaing cisco ip networks

OfficialCerts.com is a reputable IT certification examination guide, study guides and audio exam provider. We ensure that you pass your 642-832 exam in first attempt and also get high scores to acquire Cisco certification.

If you use OfficialCerts 642-832 Certification questions and answers, you will experience actual 642-832 exam questions/answers. We know exactly what is needed and have all the exam preparation material required to pass the exam. Our Cisco exam prep covers over 95% of the questions and answers that may be appeared in your 642-832 exam. Every point from pass4sure 642-832 PDF, 642-832 review will help you take Cisco 642-832 exam much easier and become Cisco certified.

Here's what you can expect from the OfficialCerts Cisco 642-832 course:

- * Up-to-Date Cisco 642-832 questions as experienced in the real exam.*
- * 100% correct Cisco 642-832 answers you simply can't find in other 642-832 courses.*
- * All of our tests are easy to download. Your file will be saved as a 642-832 PDF.*
- * Cisco 642-832 brain dump free content featuring the real 642-832 test questions.*

Cisco 642-832 certification exam is of core importance both in your Professional life and Cisco certification path. With Cisco certification you can get a good job easily in the market and get on your path for success. Professionals who passed Cisco 642-832 exam training are an absolute favorite in the industry. You will pass Cisco 642-832 certification test and career opportunities will be open for you.

<http://news.ift.org/?newsid=exams.asp?examcode=642-832>



| | | | |
|-------------------|--|-------------------------|------------|
| Exam Name: | Troubleshooting and Maintaining Cisco IP Networks | | |
| Exam Type: | Cisco | Case Studies | 3 |
| Exam Code: | 642-832 | Total Questions: | 300 |

Question: 1

What are the two reasons for the appearance of 0.0.0.0 as the next hop for a network when using the "show ip bgp" command? (Choose two)

- A. The network was originated via redistribution of an interior gateway protocol into BGP.
- B. The network was defined by a static route.
- C. The network was learned via IBGP.
- D. The network was learned via EBGP.
- E. The network was originated via a network or aggregate command.

Answer: A, E

Explanation:

from bgp faq on www.cisco.com:

q. what does a next hop of 0.0.0.0 mean in the show ip bgp command output?

a. a network in the bgp table with a next hop address of 0.0.0.0 means that the network is locally originated via redistribution of interior gateway protocol (igp) into bgp, or via a network or aggregate command in the bgp configuration.

reference:

http://www.cisco.com/en/us/tech/tk365/technologies_q_and_a_item09186a00800949e8.shtml#tw0

Question: 2

Network Topology Exhibit:

Exhibit:

MISSING

Refer to the exhibit diagram and configuration. Company 2 is summarizing its networks from AS 64100 with the aggregate-address command. However, the show ip route command on Company1 reveals the Company 2 individual networks as well as its summary route. Which option would ensure that only the summary route would appear in the routing table of Company1?

- A. Add a static route with a prefix of 192.168.24.0 255.255.252.0 pointing to the null0 interface.
- B. Create a route map permitting only the summary address.
- C. Delete the four network statements and leave only the aggregate-address statement in the BGP configuration.
- D. Add the keyword summary-only to the aggregate-address command. E. None of the other alternatives apply.

Answer: D

Explanation:

the aggregate-address <address> <netmask> command advertises the summary address as well as the advertisement of the more specific routes.

the purpose of aggregate-address <network> <netmask> summary-only command is to suppress the advertisement of more specific routes.

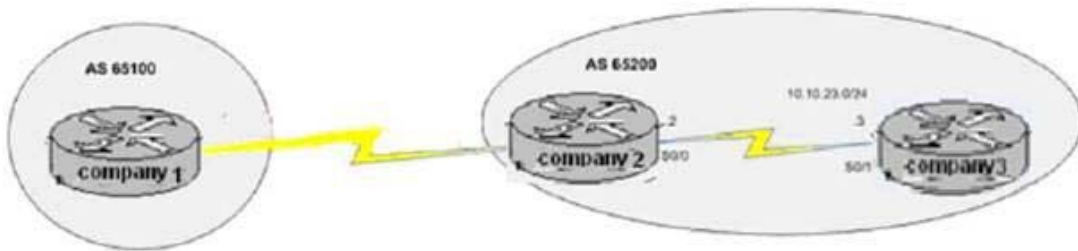
Question: 3

Network Topology Exhibit:

You work as a network engineer at Company.com. Study the exhibits carefully. BGP has been configured on the Company routers in the network. However, the IBGP peers in autonomous system 65200 have not converged. In addition, this console message was generated on router COMPANY 2: *Mar 1 03:09:07.729: %TCP-6-BADAUTH No MD5 digest from 0.10.23.2(179) to

| | | | |
|------------|---|------------------|-----|
| Exam Name: | Troubleshooting and Maintaining Cisco IP Networks | | |
| Exam Type: | Cisco | Case Studies | 3 |
| Exam Code: | 642-832 | Total Questions: | 300 |

10.10.23.3(11002) On the basis of the information that is provided, what is the cause of the problem?



Company2 Exhibit:

```
hostname Troytec 2
!
interface Loopback0
 ip address 2.2.2.2 255.255.255.0
!
interface serial0/0
 ip address 10.10.23.2 255.255.255.0
!
router ospf 1
 network 10.10.23.0 0.0.0.255 area 23
!
router bgp 65200
 neighbor 10.10.23.3 remote-as 65200
 neighbor 10.10.23.3 password TroyT
!
<output omitted>
```

Company3 Exhibit:

```
hostname Troytec3
!
interface Loopback0
 ip address 3.3.3.3 255.255.255.0
!
interface serial0/0
 ip address 10.10.23.3 255.255.255.0
!
router ospf 1
 network 10.10.23.0 0.0.0.255 area 23
!
router bgp 65200
 neighbor 10.10.23.2 remote-as 65200
 neighbor 10.10.23.2 password Troytec
!
<output omitted>
```

A. OSPF must be configured with the same MD5 authentication.

| | | | |
|-------------------|--|-------------------------|------------|
| Exam Name: | Troubleshooting and Maintaining Cisco IP Networks | | |
| Exam Type: | Cisco | Case Studies | 3 |
| Exam Code: | 642-832 | Total Questions: | 300 |

- B. BGP authentication can be used on iBGP peers when the connection is configured between the loopback interfaces.
- C. BGP authentication can be used on eBGP peers only.
- D. The password that is used for BGP authentication on both BGP peers in autonomous system 65200 must be the same.
- E. None of the other alternatives apply

Answer: D

Explanation:

the above log message is relating the invalid md5 password on neighbor. both peers need to use the same password for md5 authentication.

Question: 4

Exhibit:

You work as a network engineer at Company.com. You study the exhibit carefully. Which two statements are correct? (Choose two.)

```
Company3 # show ip bgp
BGP table version is 5, local router ID is 10.0.33.34
Status codes: s suppressed, d damped, h history, * valid, > best, i - internal
                Metric LocPrf Weight Path
*> 10.1.0.0      0.0.0.0          0         32768 ?
* 10.2.0.0      10.0.33.35       10          0 3S ?
*>              0.0.0.0          0         32768 ?
* 10.0.0.0      10.0.33.35       10          0 3S ?
*>              0.0.0.0          0         32768 ?
*> 192.168.0.0/16 10.0.33.35       10          0 3S ?
```

| | | | |
|------------|---|------------------|-----|
| Exam Name: | Troubleshooting and Maintaining Cisco IP Networks | | |
| Exam Type: | Cisco | Case Studies | 3 |
| Exam Code: | 642-832 | Total Questions: | 300 |

- A. All the routes were redistributed into BGP from an IGP.
- B. All the routes were originated by BGP with the network command.
- C. All six routes will be installed in the routing table.
- D. Four routes will be installed in the routing table.
- E. Two routes will be installed in the routing table.

Answer: A, D

Question: 5

During a redistribution of routes from OSPF into EIGRP, the Company administrator notices that none of the OSPF routes are showing up in EIGRP. What are two possible causes? (Choose two.)

- A. Incorrect distribute lists have been configured
- B. Missing ip classless command
- C. CEF not enabled
- D. No default metric configured for EIGRP

Answer: A, D

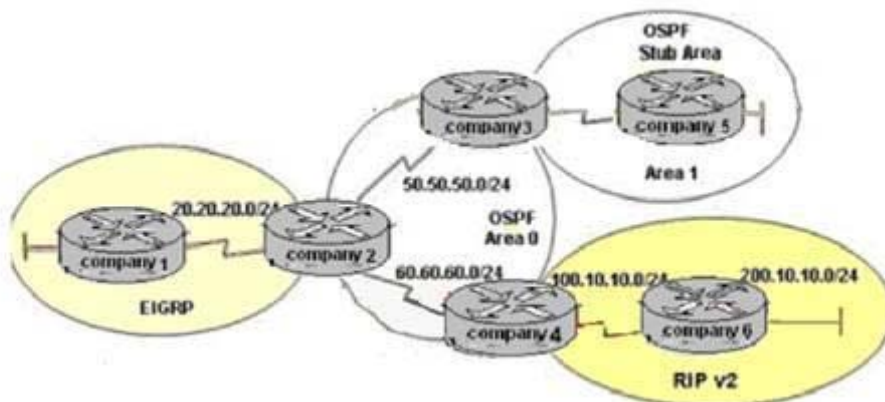
Explanation:

possible reasons for ospf routes not showing up include the use of distribute lists to control routing and no metric is configured either with the redistribute command or with default-metric. remember while redistributing into rip or eigrp, you should provide the metric. here are the default seed metrics for various protocols:

- rip : infinity
- eigrp : infinity
- ospf : 20
- is-is: 0

Question: 6

The Company network is shown in the following topology exhibit:
Company 2 configuration exhibit:



Refer to the network exhibit topology exhibit and the partial configuration exhibit of router Company 2. On router Company4, all RIP routes are redistributed into the OSPF domain. A second redistribution is configured on router Company 2 using a route map. Based on the

| | | | |
|-------------------|--|-------------------------|------------|
| Exam Name: | Troubleshooting and Maintaining Cisco IP Networks | | |
| Exam Type: | Cisco | Case Studies | 3 |
| Exam Code: | 642-832 | Total Questions: | 300 |

configuration on Company 2, which EIGRP external routes will be present in the routing table of Company1?

- A. There will be no EIGRP external routes in the routing table of Company1.
- B. The routes originating from the RIP routing domain.
- C. Only routes originating in the OSPF routing domain.
- D. All routes originating from RIP and OSPF routing domains.
- E. None of the other alternatives apply.

Answer: C

Explanation:

the route-map command is used to configure policy routing, which is often a complicated task. a route map is defined using the syntax shown in the figure.

syntax:

```
router(config)#route-map map-tag [permit | deny ] <sequence number>
```

```
router(config-map-router)#
```

the map-tag is the name, or id, of the route map. this map-tag can be set to something easily recognizable name. the route-map command changes the mode on the router to the route-map configuration mode, from there conditions can be configured for the route map.

route maps operate similar to access lists, by examining one line at a time and when a match is found, action is taken. route maps are different from numbered access lists because they can be modified without changing the entire list. each route map statement is given a number. if a sequence number is not specified, the first route map condition will automatically be numbered as ten (10). the second condition will automatically be numbered as 20, and so on. the optional sequence number can be used to indicate the position that a new route map is to have in the list of route maps already configured with the same name.

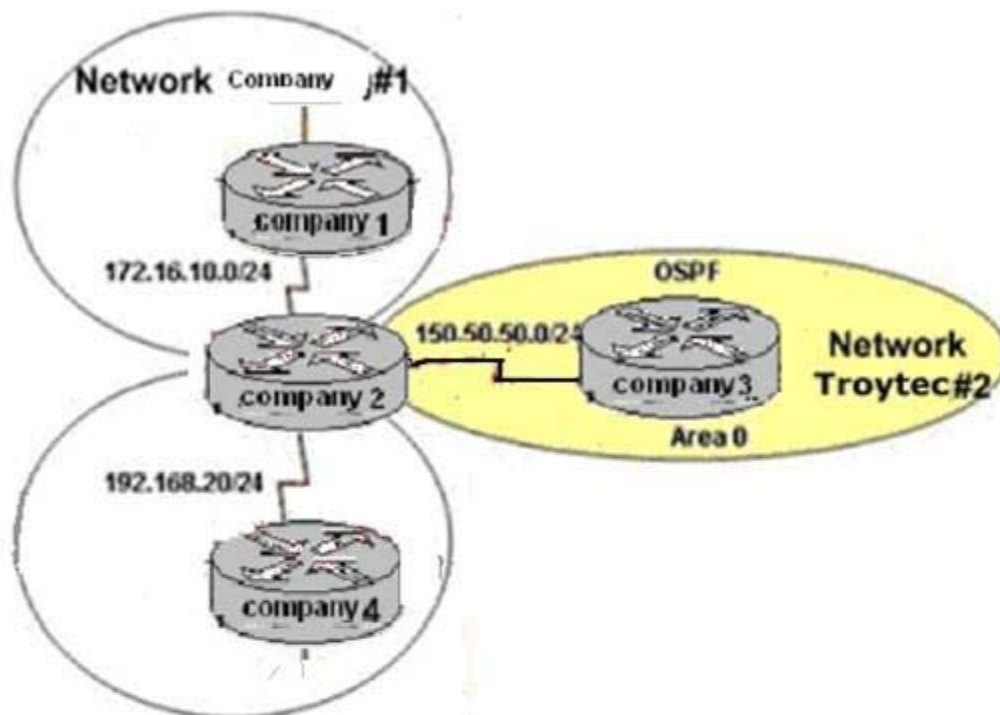
in this exhibit an access-list is created to deny from 100.10.0.0 and 200.10.10.0 (rip domain) and that is called by route-map abc. while redistributing ospf routes into eigrp the red rout-map is used; and it denies advertising the rip domain network into eigrp.

Question: 7

The Company multi-protocol WAN is shown in the exhibit:

Study the exhibits above carefully. The routing protocols EIGRP and OSPF have been configured as indicated in the exhibit. Given the partial configuration of router Company 2, which network will be present in the routing table of Company4?

| | | | |
|------------|---|------------------|-----|
| Exam Name: | Troubleshooting and Maintaining Cisco IP Networks | | |
| Exam Type: | Cisco | Case Studies | 3 |
| Exam Code: | 642-832 | Total Questions: | 300 |



Company2 configuration exhibit:

```
Company2# show running-config
router eigrp
 network 172.16.0.0
 no auto-summary
!
router eigrp 100
 redistribute ospf 1
 network 192.168.20.0
 default-metric 1500 1 255 1 1500
 no auto-summary
...
router ospf 1
 network 150.50.50.0 0.0.0.255 area 0
!
```

- A. Network Company#1 and Network Company#2
- B. neither Network Company#1 nor Network Company#2
- C. Network Company#2
- D. Network Company#1
- E. None of the other alternatives apply

Answer: C

Explanation:

by default an external eigrp route has a value of 170. by examining the exhibit we see that this default value of the external eigrp routes (see d-ex in exhibit) indeed is set to 170. the first value within the brackets display the ad, so with a value of [170/27316] the

| | | | |
|-------------------|--|-------------------------|------------|
| Exam Name: | Troubleshooting and Maintaining Cisco IP Networks | | |
| Exam Type: | Cisco | Case Studies | 3 |
| Exam Code: | 642-832 | Total Questions: | 300 |

ad is 170 and the metric of the route is 27316.

incorrect answers:

a, b: this is the subnet mask used for some of the routes in the table.

c: this is the ad of the internal eigrp routes, which is the default

e: this is the eigrp metric of the external eigrp routes.

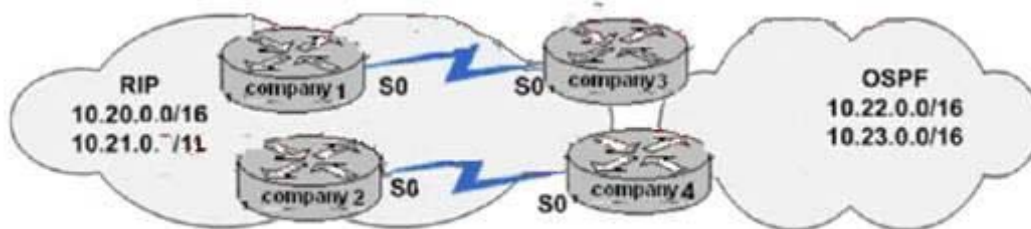
reference: what is administrative distance?

http://www.cisco.com/warp/public/105/admin_distance.html

Question: 8

Refer to the Company network shown below:

Company1 and Company 2 belong to the RIP routing domain that includes the networks 10.20.0.0/16 and 10.21.0.0/16. Company3 and Company4 are performing two-way Route redistribution between OSPF and RIP. A network administrator has discovered that Company 2 is receiving OSPF routes for the networks 10.20.0.0/16 and 10.21.0.0/16 and a routing loop has occurred. Which action will correct this problem?



- A. Set the OSPF default metric to 20.
- B. Apply an inbound ACL to the Company 2 serial interface.
- C. Configure distribute-lists on Company3 and Company4.
- D. Change the RIP administrative distance on Company3 to 110.
- E. Change the OSPF administrative distance on Company3 to 110.
- F. None of the other alternatives apply

Answer: C

Explanation:

use the distribute-list command to pick and choose which routing updates a router will send or receive. by referencing an access list, the distribute-list creates a route filter. this is a set of rules that precisely controls what routes a router will send or receive in a routing update. this command is available for all ip routing protocols and can be applied to either inbound or outbound routing updates. when applied to inbound updates, the syntax for configuring a route filter is as follows:

```
router(config-router)#distribute-list access-list-number in [interface-name]
```

when applied to outbound updates, the syntax can be more complicated as shown in the following:

```
router(config-router)#distribute-list access-list-number out [interface-name | routing-process | as-number]
```

the routing-process and as-number options are invoked when exchanging routes between different routing protocols.

Question: 9

Refer to the exhibits shown below: Network topology exhibit:

Company3 configuration exhibit:

OfficialCerts.com Certification Exam Full Version Features;

- Verified answers researched by industry experts.
- Exams **updated** on regular basis.
- Questions, Answers are downloadable in **PDF** format.
- **No authorization** code required to open exam.
- **Portable** anywhere.
- 100% success **Guarantee**.
- **Fast**, helpful support 24x7.

View list of All exams we offer;

<http://www.officialcerts.com/allexams.asp>

To contact our Support;

<http://www.officialcerts.com/support.asp>

View FAQs

<http://www.officialcerts.com/faq.asp>

Download All Exams Samples

<http://www.officialcerts.com/samples.asp>

To purchase Full Version and updated exam;

<http://www.officialcerts.com/allexams.asp>



Shop now using **PayPal**



| | | | | | | |
|------------|--------------------|------------------|---------|------------------|--------------|-----------|
| 3COM | CompTIA | Filemaker | IBM | LPI | OMG | Sun |
| ADOBE | ComputerAssociates | Fortinet | IISFA | McAfee | Oracle | Sybase |
| APC | CWNP | Foundry | Intel | McData | PMI | Symantec |
| Apple | DELL | Fujitsu | ISACA | Microsoft | Polycom | TeraData |
| BEA | ECCouncil | GuidanceSoftware | ISC2 | Mile2 | RedHat | TIA |
| BICSI | EMC | HDI | ISEB | NetworkAppliance | Sair | Tibco |
| CheckPoint | Enterasys | Hitachi | ISM | Network-General | SASInstitute | TruSecure |
| Cisco | ExamExpress | HP | Juniper | Nokia | SCP | Veritas |
| Citrix | Exin | Huawei | Legato | Nortel | See-Beyond | Vmware |
| CIW | ExtremeNetworks | Hyperion | Lotus | Novell | Google | |

You have made the
Right Choice

You are becoming member of most comprehensive, accurate, highest quality and lowest cost certification resource in the world.

