

# 4A0-105

## Alcatel-Lucent

### *Alcatel-Lucent Virtual Private LAN Services*

*OfficialCerts.com is a reputable IT certification examination guide, study guides and audio exam provider. We ensure that you pass your 4A0-105 exam in first attempt and also get high scores to acquire Alcatel-Lucent certification.*

*If you use OfficialCerts 4A0-105 Certification questions and answers, you will experience actual 4A0-105 exam questions/answers. We know exactly what is needed and have all the exam preparation material required to pass the exam. Our Alcatel-Lucent exam prep covers over 95% of the questions and answers that may be appeared in your 4A0-105 exam. Every point from pass4sure 4A0-105 PDF, 4A0-105 review will help you take Alcatel-Lucent 4A0-105 exam much easier and become Alcatel-Lucent certified.*

*Here's what you can expect from the OfficialCerts Alcatel-Lucent 4A0-105 course:*

- \* Up-to-Date Alcatel-Lucent 4A0-105 questions as experienced in the real exam.*
- \* 100% correct Alcatel-Lucent 4A0-105 answers you simply can't find in other 4A0-105 courses.*
- \* All of our tests are easy to download. Your file will be saved as a 4A0-105 PDF.*
- \* Alcatel-Lucent 4A0-105 brain dump free content featuring the real 4A0-105 test questions.*

*Alcatel-Lucent 4A0-105 certification exam is of core importance both in your Professional life and Alcatel-Lucent certification path. With Alcatel-Lucent certification you can get a good job easily in the market and get on your path for success. Professionals who passed Alcatel-Lucent 4A0-105 exam training are an absolute favorite in the industry. You will pass Alcatel-Lucent 4A0-105 certification test and career opportunities will be open for you.*

<http://news.ift.org/?newsid=exams.asp?examcode=4A0-105>



**QUESTION: 1**

Which of the following best describes the difference between VPWS and VPLS?

- A. VPWS is a point-to-point service where CEs are presented with point-to-point virtual circuits whereas
- B. VPLS is a bridged LAN service provided to a set of CEs that are members of a L2 VPN
- C. Unlike VPLS, VPWS allows CEs that are member of the same service instance to communicate with each other as if they are connected via a bridged LAN
- D. Unlike VPWS, VPLS provides customers to view the network as an unshared overlay link or circuit

**Answer: A**

**QUESTION: 2**

The behavior of VPLS can be best described by which of the following statements?

- A. A frame should be sent only to the PE that connects to the target site of the frame whenever possible
- B. A frame should be flooded as little as possible
- C. Customer frames should be switched based on the destination MAC address
- D. Only (a) and (b) are true
- E. All of the above

**Answer: E**

**QUESTION: 3**

Which of the following statements relating to VPLS are false?

- A. A VPLS is a multipoint Layer 2 service
- B. A VPLS allows multiple customer sites to be connected in a single bridged domain
- C. A VPLS on a single node requires a Service Distribution Path
- D. With VPLS Service provider can reuse their IP/MPLS infrastructure to offer multiple services
- E. The VPLS switches traffic based on MAC address associated to the appropriate SAP

**Answer: C**

**QUESTION: 4**

True or False? Multiple VPLS services can be offered over the same set of LSP tunnels?

- A. True
- B. False

**Answer: A**

**QUESTION: 5**

Which of the following contributes to VPLS implementation over MPLS?

- A. Connecting bridging-capable provider edge routers with a full mesh of MPLS LSP (label switched path) tunnels
- B. Negotiating per-service VC labels using draft-Martini encapsulation
- C. Replicating unknown and broadcast traffic in a service domain
- D. Enabling MAC learning over tunnel and access ports
- E. Using a separate forwarding information base (FIB) per VPLS service
- F. All of the above

**Answer: F**

**QUESTION: 6**

Which of the following statements is false?

- A. VPLS is a bridged LAN service
- B. VPLS provides L2 VPN services to CEs
- C. VPLS is a point-to-point service where CEs are presented with point-to-point virtual circuits
- D. CEs that are members of the same VPLS service instance communicate with each other as if they are connected via a bridged LAN

**Answer: C**

**QUESTION: 7**

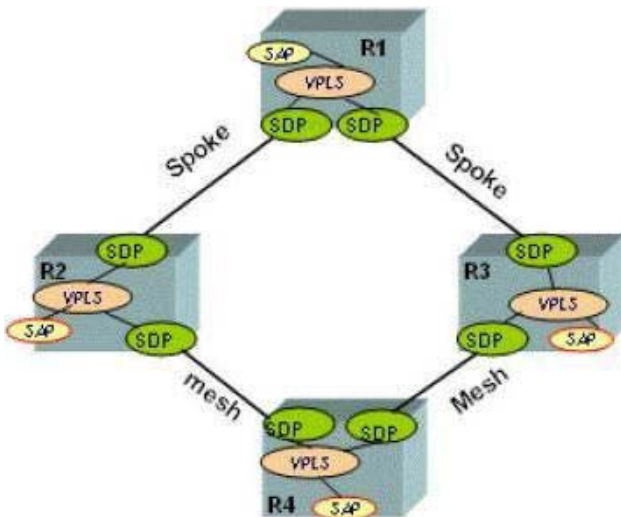
Which of the following functions must a PE router support when participating in a VPLS network? Choose all that apply.

- A. MAC learning
- B. Packet replication
- C. Proxy ARP
- D. Packet forwarding
- E. Flood all frames with an unknown destination MAC address to all PE routers associated with that VPLS

**Answer:** A, B, D, E

**QUESTION: 8**

Which SDP on R3 will MAC addresses be associated with for devices behind R2?



- A. It depends if traffic is received via R4 or R1 from devices behind R2
- B. The devices cannot communicate based on the configuration in the diagram so there will be no mac address association
- C. Devices behind R2 will be associated with the sdp between R3 and R1
- D. Devices behind R2 will be associated with the sdp between R3 and R4

**Answer:** C

**QUESTION: 9**

Select the command from the list below that produced the following output.

Err Info	Local	Remote
Type:	VPLS	VPLS
Admin State:	Up	Up
Oper State:	Up	Up
Service-MTU:	1514	1514
Customer ID:	10	10
IP Interface State:	Up	
Actual IP Addr:	10.10.10.10	20.20.20.20
Expected Peer IP:	20.20.20.20	10.10.10.10
SDP Path Used:	Yes	Yes
SDP-ID:	10	10
Admin State:	Up	Up
Operative State:	Up	Up
Binding Admin State:	Up	Up
Binding Oper State:	Up	Up
Binding VC ID:	10	10
Binding Type:	Mesh	Mesh
Binding Vc-type:	Ether	Ether
Binding Vlan-vc-tag:	N/A	N/A
Egress Label:	131068	131070
Ingress Label:	131070	131068
Egress Label Type:	Signaled	Signaled
Ingress Label Type:	Signaled	Signaled

- A. oam svc-ping 20.20.20.20 service 10 local-sdp remote-sdp
- B. oam sdp-ping 10 resp-sdp 10
- C. oam svc-ping 20.20.20.20 service 10 local-sdp
- D. oam svc-ping 10.10.10.10 service 10 local-sdp remote-sdp
- E. oam svc-ping 10.10.10.10 service 10 local-sdp

**Answer: A**

**QUESTION: 10**

Based on the following output what will the vc-id be of any mesh-sdp bound to this service?

```

A:PE-Z>config>service# show service id 9000 base
=====
Service Basic Information
=====
Service Id       : 9000                Vpn Id           : 0
Service Type    : VPLS
Customer Id     : 100
Last Status Change: 02/12/2007 13:17:11
Last Mgmt Change  : 02/12/2007 13:17:11
Admin State     : Up                  Oper State       : Up
MTU             : 1514                Def. Mesh VC Id : 1000
SAP Count       : 0                   SDP Bind Count  : 1
Send Flush on Fail: Disabled

-----
Service Access & Destination Points
-----
Identifier              Type          AdmMTU  OprMTU  Adm   Opr
-----
=====

```

- A. 9000
- B. 1514
- C. 1000
- D. 0

**Answer:** C

**QUESTION: 11**

Select items from the list below that are required for an operational mesh-sdp binding when signaling is enabled within the SDP.

- A. LDP must be enabled
- B. RSVP must be enabled
- C. An SDP must be configured on the far-end
- D. A transport tunnel must be up in both directions
- E. A transport tunnel only needs to be up in one direction

**Answer:** A, C, D

**QUESTION: 12**

Which OAM tool can be used to discover the MAC address of a CE device connected to a SAP within a VPLS service?

- A. oam cpe-ping

## OfficialCerts.com Certification Exam Full Version Features;

- Verified answers researched by industry experts.
- Exams **updated** on regular basis.
- Questions, Answers are downloadable in **PDF** format.
- **No authorization** code required to open exam.
- **Portable** anywhere.
- 100% success **Guarantee**.
- **Fast**, helpful support 24x7.

View list of All exams we offer;

<http://www.officialcerts.com/allexams.asp>

To contact our Support;

<http://www.officialcerts.com/support.asp>

View FAQs

<http://www.officialcerts.com/faq.asp>

Download All Exams Samples

<http://www.officialcerts.com/samples.asp>

To purchase Full Version and updated exam;

<http://www.officialcerts.com/allexams.asp>



Shop now using **PayPal**



3COM	CompTIA	Filemaker	IBM	LPI	OMG	Sun
ADOBE	ComputerAssociates	Fortinet	IISFA	McAfee	Oracle	Sybase
APC	CWNP	Foundry	Intel	McData	PMI	Symantec
Apple	DELL	Fujitsu	ISACA	Microsoft	Polycom	TeraData
BEA	ECCouncil	GuidanceSoftware	ISC2	Mile2	RedHat	TIA
BICSI	EMC	HDI	ISEB	NetworkAppliance	Sair	Tibco
CheckPoint	Enterasys	Hitachi	ISM	Network-General	SASInstitute	TruSecure
Cisco	ExamExpress	HP	Juniper	Nokia	SCP	Veritas
Citrix	Exin	Huawei	Legato	Nortel	See-Beyond	Vmware
CIW	ExtremeNetworks	Hyperion	Lotus	Novell	Google	

*You have made the*  
**Right Choice**

You are becoming member of most comprehensive, accurate, highest quality and lowest cost certification resource in the world.

