

4A0-102

Alcatel-Lucent

Alcatel-Lucent Border Gateway Protocol

OfficialCerts.com is a reputable IT certification examination guide, study guides and audio exam provider. We ensure that you pass your 4A0-102 exam in first attempt and also get high scores to acquire Alcatel-Lucent certification.

If you use OfficialCerts 4A0-102 Certification questions and answers, you will experience actual 4A0-102 exam questions/answers. We know exactly what is needed and have all the exam preparation material required to pass the exam. Our Alcatel-Lucent exam prep covers over 95% of the questions and answers that may be appeared in your 4A0-102 exam. Every point from pass4sure 4A0-102 PDF, 4A0-102 review will help you take Alcatel-Lucent 4A0-102 exam much easier and become Alcatel-Lucent certified.

Here's what you can expect from the OfficialCerts Alcatel-Lucent 4A0-102 course:

- * Up-to-Date Alcatel-Lucent 4A0-102 questions as experienced in the real exam.*
- * 100% correct Alcatel-Lucent 4A0-102 answers you simply can't find in other 4A0-102 courses.*
- * All of our tests are easy to download. Your file will be saved as a 4A0-102 PDF.*
- * Alcatel-Lucent 4A0-102 brain dump free content featuring the real 4A0-102 test questions.*

Alcatel-Lucent 4A0-102 certification exam is of core importance both in your Professional life and Alcatel-Lucent certification path. With Alcatel-Lucent certification you can get a good job easily in the market and get on your path for success. Professionals who passed Alcatel-Lucent 4A0-102 exam training are an absolute favorite in the industry. You will pass Alcatel-Lucent 4A0-102 certification test and career opportunities will be open for you.

<http://news.ift.org/?newsid=exams.asp?examcode=4A0-102>



QUESTION: 1.

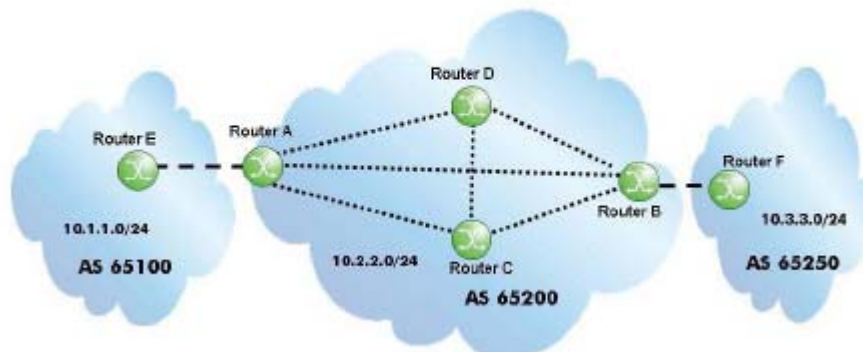
What range are 32-bit private AS numbers selected from?

- A. 64512 - 65534
- B. 131072 - 132095
- C. 131071 - 132094
- D. 132096 - 196607
- E. None; 32-bit AS numbers do not support private AS numbers.

Answer: A

QUESTION: 2.

Click the exhibit button.



Over which BGP session will router B learn the 10.1.1.0/24 prefix?

- A. The session between router A and router B
- B. The session between router C and router B.
- C. The session between router D and router B.
- D. All of the sessions, then router B will choose the best route.

Answer: A

QUESTION: 3.

Which of the following statements is true?

- A. There can only be one community associated with a route.
- B. Community is an optional non-transitive attribute.
- C. Community is not an attribute because it is not used in the route selection process.
- D. Community is an optional transitive attribute.
- E. Community is a Well-known discretionary attribute.

Answer: D

QUESTION: 4.

True or False: Any BGP route selected as best by the route selection criteria will always be in the FIB as the active route.

- A. TRUE
- B. FALSE

Answer: B

QUESTION: 5.

Excluding more specifics, which address space is covered by the default filter in SR OS and will not appear in the routing table?

- A. 0.0.0.0/8
- B. 127.0.0.0/32
- C. 224.0.0.0/8
- D. 240.0.0.0/16

Answer: A

QUESTION: 6.

Click the exhibit button.

```
prefix-list "intoBGP" prefix 192.168.4.0/28 longer  
  
description "Sample Policy"  
  entry 10  
    from  
      protocol ospf  
      prefix-list "intoBGP"  
    exit  
    action accept  
    origin igp  
  exit  
exit  
default-action reject
```

The policy "Sample-Policy" is applied as the only export policy to BGP. Based on the configuration shown in the exhibit, which of the following statements is true?

- A. OSPF routes of network 192.168.4.0/28 or longer will have their origin code changed to IGP, but they will not be advertised into BGP. All transit BGP routes will be dropped.
- B. OSPF routes of network 192.168.4.0/24 or longer will have their origin code changed to IGP and will be advertised to BGP.
- C. OSPF routes of network 192.168.4.0/28 or longer will have their origin code changed to IGP, but will not be advertised to BGP.
- D. OSPF routes of network 192.168.4.0/28 or longer will have their origin code changed to IGP and will be advertised to BGP.
- E. OSPF routes of network 192.168.4.0/28 or longer will have their origin code changed to IGP and will be advertised to BGP. All transit BGP routes will be dropped.

Answer: E

QUESTION: 7.

What is the default local preference on the Alcatel-Lucent 7750 SR?

- A. 10
- B. 100
- C. 0
- D. None
- E. 1000

Answer: B

QUESTION: 8.

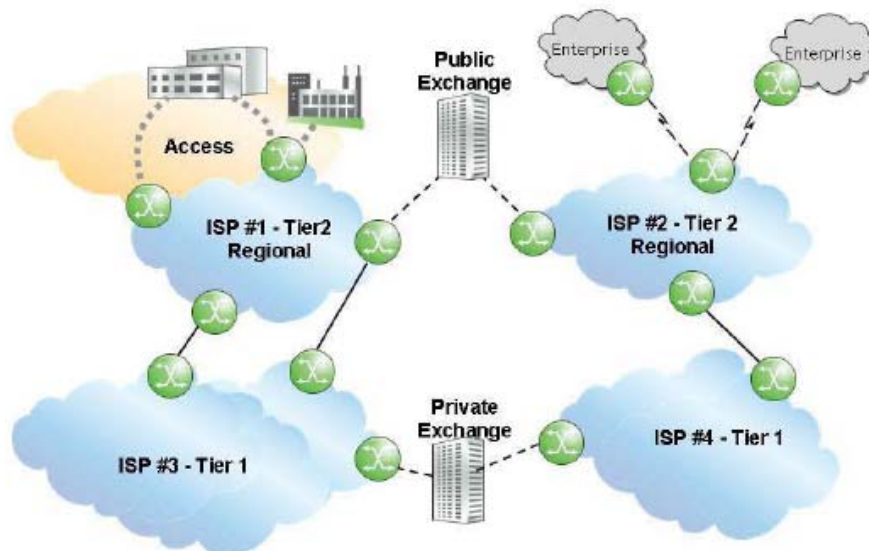
Which of the following terms refers to the AS's that comprise a confederation?

- A. Partners
- B. Subordinates
- C. Members
- D. Provincial
- E. Federal

Answer: C

QUESTION: 9.

Click the exhibit button.



ISP 1 and ISP 2 have fewer than 50 transit BGP customers of their own, and are similarly sized in terms of geographic service areas and traffic patterns. What are the most likely relationships between ISP 1 and the other ISPs?

- A. ISP 1 has a peering relationship with ISP 2 and ISP 4.

OfficialCerts.com Certification Exam Full Version Features;

- Verified answers researched by industry experts.
- Exams **updated** on regular basis.
- Questions, Answers are downloadable in **PDF** format.
- **No authorization** code required to open exam.
- **Portable** anywhere.
- 100% success **Guarantee**.
- **Fast**, helpful support 24x7.

View list of All exams we offer;

<http://www.officialcerts.com/allexams.asp>

To contact our Support;

<http://www.officialcerts.com/support.asp>

View FAQs

<http://www.officialcerts.com/faq.asp>

Download All Exams Samples

<http://www.officialcerts.com/samples.asp>

To purchase Full Version and updated exam;

<http://www.officialcerts.com/allexams.asp>



Shop now using **PayPal**



3COM	CompTIA	Filemaker	IBM	LPI	OMG	Sun
ADOBE	ComputerAssociates	Fortinet	IISFA	McAfee	Oracle	Sybase
APC	CWNP	Foundry	Intel	McData	PMI	Symantec
Apple	DELL	Fujitsu	ISACA	Microsoft	Polycom	TeraData
BEA	ECCouncil	GuidanceSoftware	ISC2	Mile2	RedHat	TIA
BICSI	EMC	HDI	ISEB	NetworkAppliance	Sair	Tibco
CheckPoint	Enterasys	Hitachi	ISM	Network-General	SASInstitute	TruSecure
Cisco	ExamExpress	HP	Juniper	Nokia	SCP	Veritas
Citrix	Exin	Huawei	Legato	Nortel	See-Beyond	Vmware
CIW	ExtremeNetworks	Hyperion	Lotus	Novell	Google	

You have made the
Right Choice

You are becoming member of most comprehensive, accurate, highest quality and lowest cost certification resource in the world.

